

Keysight B4623 LPDDR Bus Decoder

User's Guide

Notices

© Keysight Technologies 2013-2014

No part of this manual may be reproduced in any form or by any means (including electronic storage and retrieval or translation into a foreign language) without prior agreement and written consent from Keysight Technologies as governed by United States and international copyright laws.

Software Release

06.00.0000

Edition

August 2014

Available in electronic format only

Keysight Technologies
1900 Garden of the Gods Road
Colorado Springs, CO 80907 USA

Warranty

THE MATERIAL CONTAINED IN THIS DOCUMENT IS PROVIDED "AS IS," AND IS SUBJECT TO BEING CHANGED, WITHOUT NOTICE, IN FUTURE EDITIONS. FURTHER, TO THE MAXIMUM EXTENT PERMITTED BY APPLICABLE LAW, KEYSIGHT DISCLAIMS ALL WARRANTIES, EITHER EXPRESS OR IMPLIED WITH REGARD TO THIS MANUAL AND ANY INFORMATION CONTAINED HEREIN, INCLUDING BUT NOT LIMITED TO THE IMPLIED WARRANTIES OF MERCHANTABILITY AND FITNESS FOR A PARTICULAR PURPOSE. KEYSIGHT SHALL NOT BE LIABLE FOR ERRORS OR FOR INCIDENTAL OR CONSEQUENTIAL DAMAGES IN CONNECTION WITH THE FURNISHING, USE, OR PERFORMANCE OF THIS DOCUMENT OR ANY INFORMATION CONTAINED HEREIN. SHOULD KEYSIGHT AND THE USER HAVE A SEPARATE WRITTEN AGREEMENT WITH WARRANTY TERMS COVERING THE MATERIAL IN THIS DOCUMENT THAT CONFLICT WITH THESE TERMS, THE WARRANTY TERMS IN THE SEPARATE AGREEMENT WILL CONTROL.

Technology Licenses

The hardware and/or software described in this document are furnished under a license and may be used or copied only in accordance with the terms of such license.

Restricted Rights Legend

If software is for use in the performance of a U.S. Government prime contract or subcontract, Software is delivered and licensed as "Commercial computer software" as defined in DFAR 252.227-7014 (June 1995), or as a "commercial item" as defined in FAR 2.101(a) or as "Restricted computer software" as defined in FAR 52.227-19 (June 1987) or any equivalent agency regulation or contract clause. Use, duplication or disclosure of Software is subject to Keysight Technologies' standard commercial license terms, and non-DOD Departments and Agencies of the U.S. Government will receive no greater than Restricted Rights as defined in FAR 52.227-19(c)(1-2) (June 1987). U.S. Government users will receive no greater than Limited Rights as defined in FAR

52.227-14 (June 1987) or DFAR 252.227-7015 (b)(2) (November 1995), as applicable in any technical data.

Safety Notices

CAUTION

A CAUTION notice denotes a hazard. It calls attention to an operating procedure, practice, or the like that, if not correctly performed or adhered to, could result in damage to the product or loss of important data. Do not proceed beyond a CAUTION notice until the indicated conditions are fully understood and met.

WARNING

A WARNING notice denotes a hazard. It calls attention to an operating procedure, practice, or the like that, if not correctly performed or adhered to, could result in personal injury or death. Do not proceed beyond a WARNING notice until the indicated conditions are fully understood and met.

Safety Summary

The following general safety precautions must be observed during all phases of operation of this instrument. Failure to comply with these precautions or with specific warnings or operating instructions in the product manuals violates safety standards of design, manufacture, and intended use of the instrument. Keysight Technologies assumes no liability for the customer's failure to comply with these requirements. Product manuals are provided with your instrument on CD-ROM and/or in printed form. Printed manuals are an option for many products. Manuals may also be available on the Web. Go to www.keysight.com and type in your product number in the Search field at the top of the page.

General	Do not use this product in any manner not specified by the manufacturer. The protective features of this product may be impaired if it is used in a manner not specified in the operation instructions.
Before Applying Power	Verify that all safety precautions are taken. Make all connections to the unit before applying power. Note the instrument's external markings described in "Safety Symbols".
Ground the Instrument	If your product is provided with a grounding type power plug, the instrument chassis and cover must be connected to an electrical ground to minimize shock hazard. The ground pin must be firmly connected to an electrical ground (safety ground) terminal at the power outlet. Any interruption of the protective (grounding) conductor or disconnection of the protective earth terminal will cause a potential shock hazard that could result in personal injury.
Fuses	See the user's guide or operator's manual for information about line-fuse replacement. Some instruments contain an internal fuse, which is not user accessible.
Do Not Operate in an Explosive Atmosphere	Do not operate the instrument in the presence of flammable gases or fumes.
Do Not Remove the Instrument Cover	Only qualified, service-trained personnel who are aware of the hazards involved should remove instrument covers. Always disconnect the power cable and any external circuits before removing the instrument cover.
Cleaning	Clean the outside of the instrument with a soft, lint-free, slightly dampened cloth. Do not use detergent or chemical solvents.
Do Not Modify the Instrument	Do not install substitute parts or perform any unauthorized modification to the product. Return the product to an Keysight Sales and Service Office for service and repair to ensure that safety features are maintained.
In Case of Damage	Instruments that appear damaged or defective should be made inoperative and secured against unintended operation until they can be repaired by qualified service personnel.

CAUTION











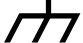



A CAUTION notice denotes a hazard. It calls attention to an operating procedure, practice, or the like that, if not correctly performed or adhered to, could result in damage to the product or loss of important data. Do not proceed beyond a CAUTION notice until the indicated conditions are fully understood and met.

WARNING

A WARNING notice denotes a hazard. It calls attention to an operating procedure, practice, or the like that, if not correctly performed or adhered to, could result in personal injury or death. Do not proceed beyond a WARNING notice until the indicated conditions are fully understood and met.

Safety Symbols




Table 1 Safety Symbol

Symbol	Description
	Direct current
	Alternating current
	Both direct and alternating current
	Three phase alternating current
	Three phase alternating current
	Earth ground terminal
	Protective earth ground terminal
	Frame or chassis ground terminal
	Terminal is at earth potential
	Equipotentiality
N	Neutral conductor on permanently installed equipment
L	Line conductor on permanently installed equipment
	On (mains supply)
	Off (mains supply)
	Stand by (mains supply). The instrument is not completely disconnected from the mains supply when the power switch is in the stand by position
	In position of a bi-stable push switch

Symbol	Description
	Out position of a bi-stable push switch
	Equipment protected throughout by DOUBLE INSULATION or REINFORCED INSULATION
	Caution, refer to accompanying documentation
	Caution, risk of electric shock
	Do not apply around or remove from HAZARDOUS LIVE conductors
	Application around and removal from HAZARDOUS LIVE conductors is permitted
	Caution, hot surface
	Ionizing radiation
CAT I	IEC Measurement Category I
CAT II	Measurement Category II
CAT III	Measurement Category III
CAT IV	Measurement Category IV

Compliance and Environmental Information

Table 2 Compliance and Environmental Information

Safety Symbol	Description
	CSA is the Canadian certification mark to demonstrate compliance with the Safety requirements.
 N10149	The C-tick mark is a registered trademark of the Spectrum Management Agency of Australia. This signifies compliance with the Australia EMC Framework regulations under the terms of the Radio Communication Act of 1992.
	CE compliance marking to the EU Safety and EMC Directives. ISM GRP-1A classification according to the international EMC standard. ICES/NMB-001 compliance marking to the Canadian EMC standard.

Using the LPDDR Bus Decoder

The Keysight B4623 bus decoder for LPDDR, used with an Keysight Technologies logic analyzer, lets you decode and view transactions, commands, and data from a LPDDR1, LPDDR2, or LPDDR3 SDRAM memory bus in your device under test.

TIP

The LPDDR1 memory bus is also known as LPDDR; however, in this help "LPDDR" is used when referring to either bus and "LPDDR2" and "LPDDR1" are used when referring to specific memory buses.

The LPDDR memory standard follows the same architecture as the previous DDR memory buses. Commands and address are unidirectional signals from the memory controller to the memory parts. They are synchronous to a differential common clock (CK) which is running at half the data transfer rate. The data bus (DQ) is bidirectional. It is source synchronous to bidirectional differential strobes (DQS). The strobes are at the same frequency as the common clock with the data being sampled on both edges. The strobes are edge aligned with the read data and centered in the write data.

The strobes are active only during actual data transfers. The strobes are delayed from the read and write commands by a fixed number of clock cycles. This delay or latency needs to be entered into the decoder interface as Total Read Latency and Total Write Latency.

The LPDDR data bus is displayed as raw hexadecimal data. The decoder does not inverse assemble the data payload.

The decoder works with these types of memory bus probes:

- Keysight W2637A LPDDR1 x16 BGA probe.
- Keysight W2638A LPDDR1 x32 BGA probe.
- Soft Touch or Soft Touch Pro embedded custom midbus probing.

These topics tell you more about using the LPDDR bus decoder:

- ["Installing Software and Licenses"](#) on page 11
- ["Setting Up for LPDDR Bus Decode"](#) on page 15
- ["Capturing Data"](#) on page 43
- ["Understanding the Listing"](#) on page 45
- ["Filtering or Colorizing the Display"](#) on page 57
- ["Troubleshooting the Decoder"](#) on page 59

Related Tools

- The decoder includes an *Address Conversion Tool* that converts row and column addresses into physical addresses. For more information, see ["To convert to and from physical addresses"](#) on page 44.
- The *DDR Setup Assistant* is a wizard-like application that helps you set up your logic analyzer properly for DDR data capture and analysis. It guides you through the setup process and automates setting threshold voltages and sample positions for control/address signals. For more information, see ["DDR Setup Assistant—At a Glance"](#) (in the online help).
- The *DDR3 Eyefinder* tool helps you set the logic analyzer sampling positions for read data and write data signals. For more information, see ["Using DDR3 Eyefinder"](#) (in the online help).

Contents

Safety Summary	3
Compliance and Environmental Information	6
Using the LPDDR Bus Decoder	7
1 Installing Software and Licenses	
B4623 Licenses	12
2 Setting Up for LPDDR Bus Decode	
Connecting to the Device Under Test (DUT)	16
Configuring the Decoder	17
To load a configuration file	17
To configure the decoder	19
To set sampling positions	22
3 Decoding Self Refresh and Power Down Events	
Disabling Clock Qualifiers	36
Setting the Clock Threshold	37
Viewing Power Down Events	38
Enabling/Disabling Decode and Display of Specific Power Down Exit Events	39
4 Capturing Data	
To convert to and from physical addresses	44
5 Understanding the Listing	
Buses and Signals Captured by the Logic Analyzer	46
LPDDR2 Command Symbols	49
LPDDR1 Command Symbols	49
To find commands of a certain type in the listing	50
Buses Generated by the Decoder	52
Cycle Type	54

6 Filtering or Colorizing the Display

7 Troubleshooting the Decoder

A Customizing Physical Address Construction

Index

1

Installing Software and Licenses

The Keysight B4623 Bus Decoder for LPDDR software decodes the acquired LPDDR traces. The acquisition can be done using an Keysight Logic Analyzer module. You can also use this software to decode the LPDDR data offline.

This software allows you to view transactions, commands, and data from a LPDDR, LPDDR2, or LPDDR3 memory bus (depending on which license of the software is installed).

To use the B4623 Bus Decoder for LPDDR software, you need to install the following software components from the Keysight web site at:

["www.keysight.com/find/la-sw-download"](http://www.keysight.com/find/la-sw-download).

- a The B4623 software works with the Keysight Logic and Protocol Analyzer software. Therefore, you must ensure that the Keysight Logic and Protocol Analyzer software is installed.
- b Install the "Keysight B4623 Bus Decoder for LPDDR" package and follow the instructions on your Entitlement Certificate to enable its license (see **"B4623 Licenses"** on page 12).
- c Install the "Keysight DDR Setup Assistant and Eyefinder" package. The DDR3 Eyefinder tool is not a licensed software. If you are performing DDR measurements without the B4623 bus decoder for LPDDR, you must install the "Keysight DDR3 Eyefinder" package from the Keysight web site.

- See Also
- "Inverse assembly tools" (in the online help)
 - "To install a tool" (in the online help)
 - For information on how to probe the signals, see **"Setting Up for LPDDR Bus Decode"** on page 15.

B4623 Licenses

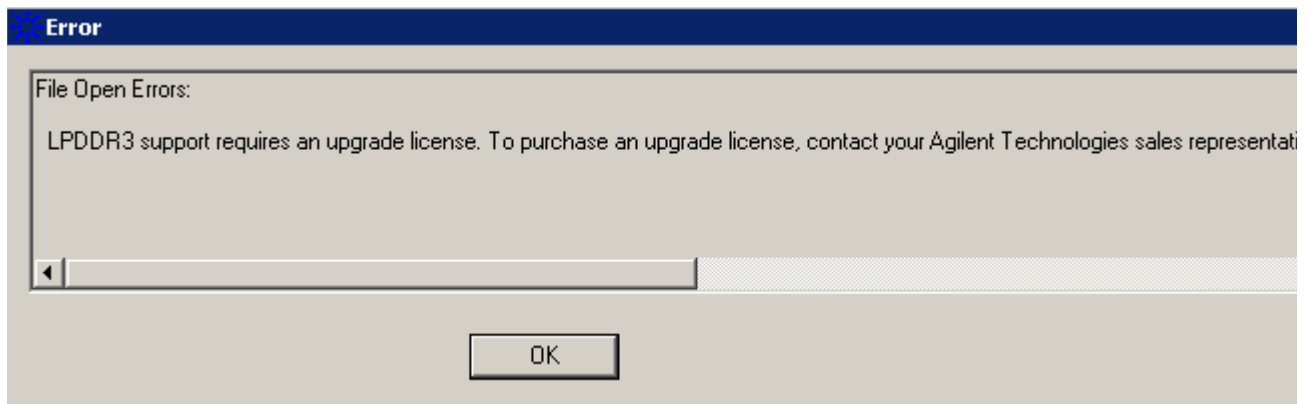
The following two licensed options of the B4623 software are currently available.

- B4623A license
- B4623B license

B4623B is an upgrade license and provides the following additional feature in comparison to B4623A.

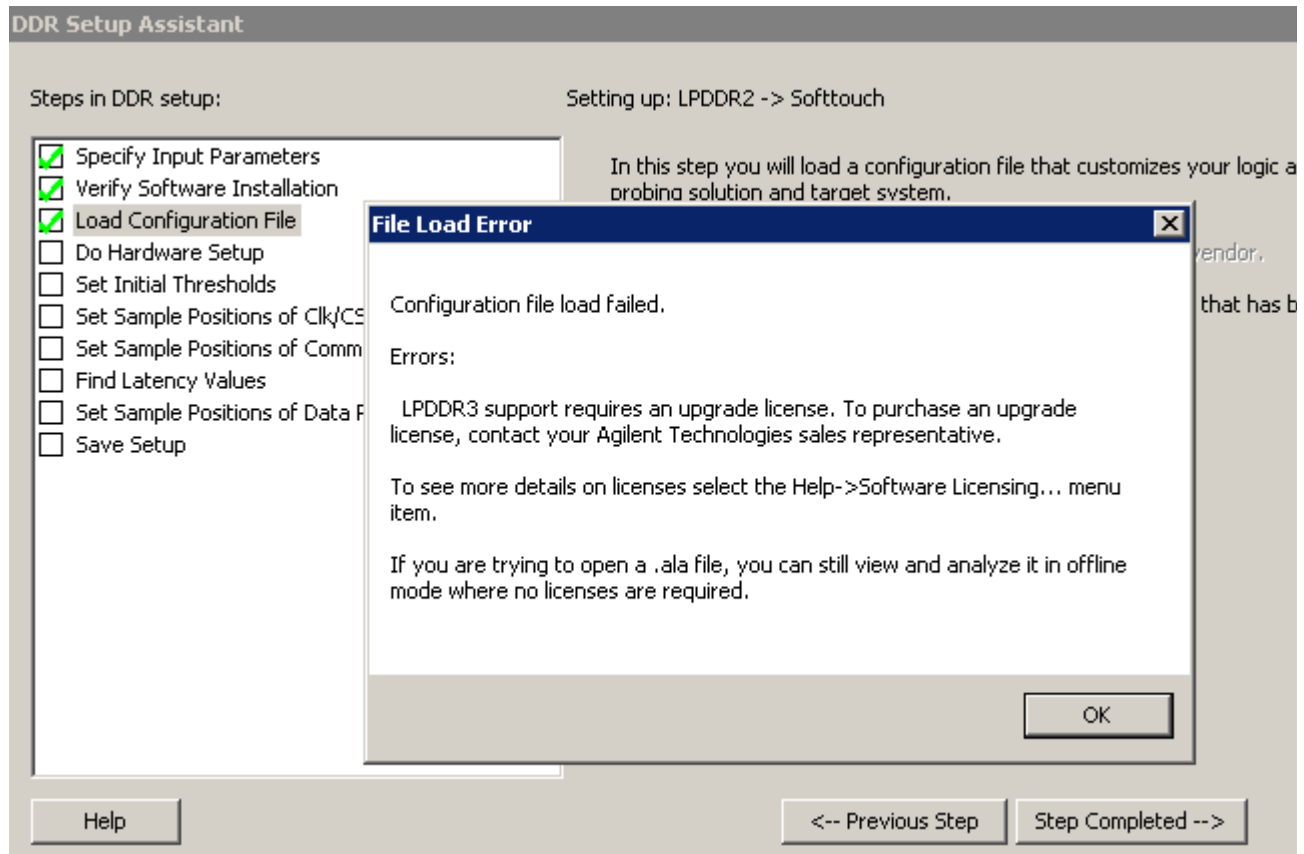
- Decoder support for LPDDR3

With the B4623A license, you cannot open and use an LPDDR3 configuration file. Doing so, results in the display of the following error message.



LPDDR3 configuration files require the B4623B upgrade license. Contact Keysight Technologies sales representative to purchase this upgrade license. Once you have installed this license, you can access all the available LPDDR files including LPDDR3 files.

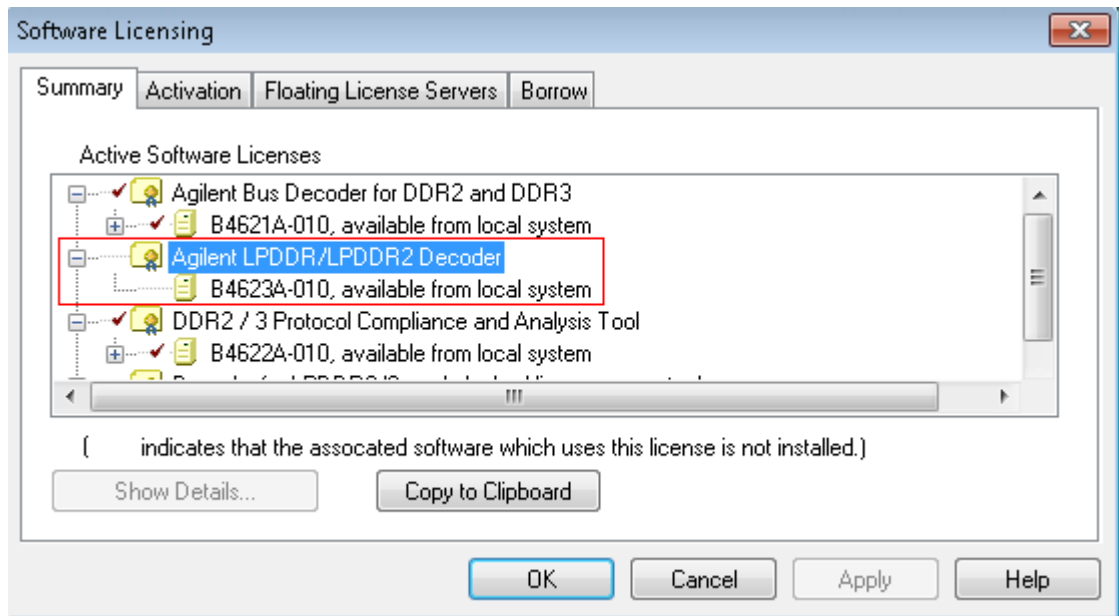
A similar error message is displayed when you have only the B4623A license and you try to select LPDDR3 as the DDR bus type in the DDR Setup Assistant wizard while defining the LPDDR setup.



Upgrading to the B4623B license allows you to select LPDDR3 in the DDR Setup Assistant wizard.

You can check if the B4623A or B4623B license is installed on your PC by clicking **Help > Software Licensing....** in the Keysight Logic and Protocol Analyzer GUI.

1 Installing Software and Licenses



See Also • "To activate software licenses" (in the online help).

2 Setting Up for LPDDR Bus Decode

The easiest way to set up the logic analysis system for LPDDR bus decode is by using the *DDR Setup Assistant*. The DDR Setup Assistant is a wizard-like application that helps you set up your logic analyzer properly for DDR data capture and analysis. It guides you through the setup process and automates setting threshold voltages and sample positions for control/address signals. See:

- "Using the DDR Setup Assistant" (in the online help)

The following topics describe how you can set up for LPDDR bus decode without using the DDR Setup Assistant.

- ["Connecting to the Device Under Test \(DUT\)"](#) on page 16
- ["Configuring the Decoder"](#) on page 17

Connecting to the Device Under Test (DUT)

The bus decoder is intended for use with Keysight's LPDDR memory bus probes.

You need to connect the probe to your device under test, then connect the logic analyzer pods to the probe.

For information on how to make these connections, see the manual for the probe you are using.

Configuring the Decoder

Configure the logic analyzer by loading a configuration file then adjusting the settings for your device under test.

- What to Configure**
- “To load a configuration file” on page 17
 - “To configure the decoder” on page 19
 - “To set sampling positions” on page 22

- Understanding Sample Positions and Latency Settings**
- Sample Positions** tell the logic analyzer when to sample each signal. If the sampling positions are not set correctly, data cannot be captured reliably.
- Total Read Latency** and **Total Write Latency** settings tell the decoder how to align the captured data. These values represent the total latency for your system and therefore should include parameters that affect total latency. If the latency settings are not correct, data will appear to be misaligned with the corresponding command in the waveform and listing displays.

To load a configuration file

Several Keysight provided configuration files are available for use with the LPDDR decoder depending on the installed software license (B4623A or B4623B). With the B4623B license, you get an additional LPDDR3 decode support that allows you to access and use LPDDR3 configuration files as well, in addition to the LPDDR1/2 files.

When you load a configuration file, it will set up the buses and signals, add the decoder tool, and add a listing tool.

If you are using the decoder without an Keysight LPDDR probe, see “To create a configuration file” on page 18.

To load a provided configuration file:

- 1 Close the logic analyzer window, if it is open.
- 2 Select **Start>All Programs>Keysight Logic Analyzer>DDR Bus Decoder Default Configs**.
- 3 Select the LPDDR bus type.
- 4 Select the directory corresponding the model number of probe you are using and then choose a configuration file corresponding to the bus size and speed.

When you click on a configuration file, the Logic and Protocol Analyzer software will start and configure itself to use the decoder.

To load a provided configuration file without restarting the logic and protocol analyzer software:

- 1 Select **File>Open...**
- 2 Navigate to the configuration file. The default location is:

2 Setting Up for LPDDR Bus Decode

On Windows XP

C:\Documents and Settings\All Users\Shared Documents\Keysight Technologies\Logic Analyzer\Default Configs\Keysight\LPDDR Bus Decoder Default Configs

On Windows 7

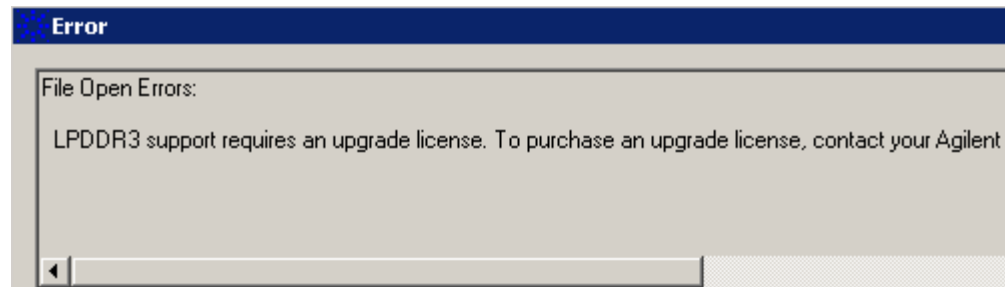
C:\Users\Public\Documents\Keysight Technologies\Logic Analyzer\Default Configs\Keysight\LPDDR Bus Decoder Default Configs

- 3 Select the file and click **Open**.

The provided configuration files are read-only. If you modify the configuration and want to save your work, select **File>Save As...** and save the configuration with a new name.

NOTE

At times, when you try to open a configuration file, the following error message is displayed. This error message indicates that the file you are trying to open requires the upgrade license - B4623B and the license currently installed is B4623A. To open such a file, you need to purchase and install the B4623B upgrade license.



You can verify which license of B4623 is currently installed by clicking **Help > Software Licensing** in the Logic and Protocol Analyzer GUI.

See Also To update a .ala configuration file which was saved using a previous version of the decoder, see ["To load a configuration file from a previous version of the decoder"](#) on page 19.

To create a configuration file

The provided configuration files are only valid when used with the corresponding Keysight LPDDR memory probe.

If you are using some other probing scheme, you must create your own configuration files. Extreme care must be taken to ensure that your configuration files meet the requirements of the decoder.

- Use a provided configuration file as a model.
- Make sure that your configuration file has the same buses and signals as the provided configuration file. The name and size of each bus and signal must be *exactly* the same as it is in the provided configuration file.

- Verify that the buses and signals listed in "Buses and Signals Captured by the Logic Analyzer" on page 46 are all present.

To simplify the procedure of customized configuration file creation, Keysight provides the *DDR/LPDDR Custom Configuration Creator* tool. The tool ensures that all the layout information needed by LPDDR Decoder is included in the created configuration file.

This tool is a part of the Keysight DDR Setup Assistant and Eyefinder software package. Therefore, the tool is available only after you install this package.

To know more about this tool, refer to its online help that gets installed with this tool's software.

To load a configuration file from a previous version of the decoder

When you upgrade the decoder, the new version of the decoder may have different input buses and signals. If you load an .ala configuration file which was saved with the old version of the decoder, you may see error messages. Follow this procedure to update the configuration file for the new decoder.

- 1 Open the .ala configuration file.
- 2 Write down the user preferences or take a screen shot of the user preferences.
- 3 Save the configuration file (with data) using the .xml format.
- 4 Open the Overview display and remove the decoder.
- 5 Load the .xml configuration file.
- 6 Add the decoder.
- 7 Restore the user preferences.
- 8 Save the configuration as using the .ala format.

To configure the decoder

Use the **System Configuration** dialog to tell the decoder which chip selects will be used by your device under test and to specify details about how the bus works.

To open the System Configuration dialog

- From the main menu bar, select **Tools>DDR Bus Decoder>System Configuration**, or
- In the Overview display, click the **Properties** button on the LPDDR Bus Decoder tool then select **System Configuration**.

For each of the enabled chip selects, choose which clock enable signal is used. A state will only be decoded when both an enabled chip select and the corresponding clock enable bit are active. The choices are determined by the number of bits in the CKE bus. If only CKE[0] is present, you do not need to make a selection.

- Memory Type** Choose the type of memory you are using.
- Memory Width** This value is used to compute physical addresses. For memory widths greater than 8 bits, the column address is padded with the appropriate number of 0 bits. You can see how this works by examining the Address Summary at the bottom of the dialog as you select different memory widths.
- Row Bits and Column Bits** Choose the number of Row Bits from the ROWADDR bus that are valid during the Activate cycle. The number of Row Bits will match the number of pink bits in the Address Summary at the bottom of the dialog.
- Choose the number of Column Bits from the COLADDR bus that are valid during the Read or Write cycle. The number of Column Bits will match the number of yellow bits in the Address Summary at the bottom of the dialog.
- If ROWADDR and COLADDR are properly defined to reflect the number of bits in your device under test, when the LPDDR Decoder tool is added to the logic analyzer, the Row Bits and Column Bits will automatically be set to the proper values.
- If using LPDDR2, then COLADDR[0] must also be defined. Assign COLADDR[0] to any unused channel, and set the signal threshold so that COLADDR[0] is always zero.
- Total Read Latency and Total Write Latency** Enter the number of full clock cycles between the time that a read or write command appears on the bus and the time when valid data appears on the data bus. These values represent the total latency for your system and therefore should include parameters that affect total latency.
- These latency settings are affected by several factors, including the inherent read latency of the memory part, the posted additive latency, write leveling, and the logic analyzer sample position.
- Burst Type** Select the order of the bytes after the Read/Write Command (Sequential or Interleaved). The decoder uses this setting to calculate and display the appropriate physical address for each memory cycle.
- Burst Length** Select the number of bursts after a Read/Write Command.
- DM Enable** Enables write data masking. This option is available only when the DM_W bus exists. If DM Enable is set, the decoder will apply the DM_W bits to the DATA_W bits before displaying the write data value in the 'DDR Bus Decode' column.

For example, if:

```
DM = enabled
Memory Width = 32
DM_W = 0001
DATA_W = 0123 4567
```

then the decoder will display the data as:

2 Setting Up for LPDDR Bus Decode

```
mem write 0x 0123 45--
```

This option is disabled if the DM_W bus does not exist.

Decode specific exit powerdown conditions

Choose whether or not you want the LPDDR Decoder to decode and display the specific power down events from which the DUT exited.

If you deselect this checkbox, the decoder records power down entries and exits but does not decode the specific event in case of exits. Instead, it displays a generic exit label in the Listing window for all such exit events.

For detailed information on how to decode and view self refresh and power down events, refer to the topic "[Decoding Self Refresh and Power Down Events](#)" on page 35.

Physical Address Construction

Choose whether the physical (linear) addresses should be constructed from {BA,RA,CA} or {RA,BA,CA}. In most cases, the physical address is constructed from {BA,RA,CA}.

If your system uses a different convention, you need to create a .NET assembly to translate between a physical address and the various fields which make up a bus address. If this is the case, select "User supplied .NET assembly" and refer to [Appendix A](#), "Customizing Physical Address Construction," starting on page 63.

Address Summary

The address summary is a picture that shows how physical addresses will be constructed, based on user inputs for Memory Width, Row Bits, Column Bits, and Bank Address Location.

See Also

- To find the Row and Column Bits and Burst Length, refer to the technical data sheet for the DDR memory part you are using or capture data from a mode register set (MRS) cycle as the device under test boots up.

To set sampling positions

Data on the LPDDR bus is valid for a very short time. Sample positions tell the logic analyzer when each signal is valid. You must adjust the logic analyzer's sample positions in order to reliably capture data on your bus. In addition, you must set the Total Read Latency and Total Write Latency in the decoder so that data in the listing will be properly aligned.

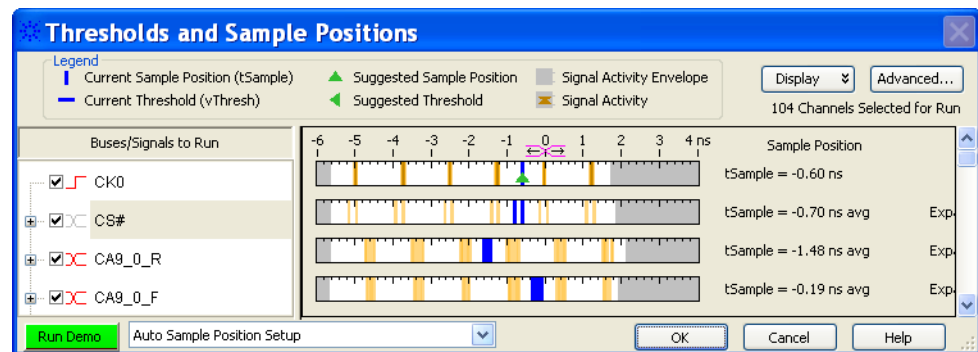
The Keysight logic analyzer requires a single clock for all data acquisition. All signals are sampled on both edges of the sample clock. You need to identify correct sample points for three clock groups: Command and Address, Read Data, and Write Data.

- 1 Install the memory bus probe and connect it to the logic analyzer.
- 2 Load the default configuration into the logic analyzer.
- 3 Configure the memory bus.
- 4 Power up the target with a stimulus that exercises the range of available memory.
- 5 Set the sampling positions for the Command and Address signals (LPDDR2/LPDDR3 (see [page 23](#)), LPDDR1 (see [page 23](#))).

- 6 Set the logic analyzer sampling positions for Read Data and Write Data. There are two ways to do this:
 - Set sampling positions with the DDR3 Eyefinder (see page 27) — Use this procedure to set sample positions using an automated tool.
 - Set sampling positions manually (see page 27) — Use this procedure for LPDDR. You can also use this procedure for LPDDR2/LPDDR3 if you have full control of the bus (so you can to generate separate read and write traffic) and you want precise control over sample positions.
- 7 Set the Total Read Latency and Total Write Latency in the decoder.

To set sampling positions for LPDDR2/LPDDR3 Command and Address

- 1 Set CK0 in the first eye just to the left of 0.
- 2 Set CS# and CKE in the similar eye (just left of 0).
- 3 Then set CA9_0_R one eye to the left and set CA9_0_F in the eye that is most similar to CS#. Refer to the diagram below.



Setting the signals CA9_0_R and CA9_0_F automatically adjusts all of the other Command and Address buses/signals. (There is no need to adjust STAT, ROWADDR, COLADDR, COMMAND, COMMAND0, BA, AB, AP or any other command or address bus signal.)

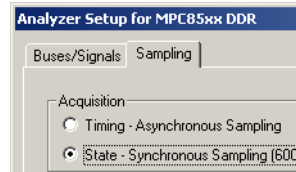
To set sampling positions for LPDDR1 Command and Address

The Command and Address group of signals consists of CK, CKE, COMMAND, ADDR, BA, CS#, ODT and RESET#.

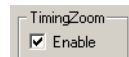
The supplied configuration files set the logic analyzer to sample on the rising and falling edge of the clock, with no positive or negative delay. You should fine-tune the sampling position for your measurement setup.

- Capture some data**
- 1 Configure the decoder (see page 19).
 - 2 Go to the Sampling tab.

2 Setting Up for LPDDR Bus Decode



- 3 Check that TimingZoom mode is enabled (on some analyzers).



- 4 Capture some data. To do this, run the analyzer then stop it manually.



Set the sampling positions

- 1 Open the Sampling tab of the Analyzer Setup dialog.
- 2 Select **Thresholds and Sample Positions...**
- 3 Select the signals associated with the address group.
- 4 At the bottom of the dialog, select **Run the Auto Sample Position Setup** and click Run.

At this point, the results should approximate the initial sample positions from the configuration.

Some signals may not be active. $CKE[1]$ is only active in dual and quad rank configurations. Some of the upper ADDR signals may not be active depending upon the size of the memory size in the target. $ODT[1]$ will not be active in all target configurations.

Note that using Eye Scan with Sample Position Setup Only can often provide a better picture of the active and inactive signals.

Verify the sample positions

- 1 Run the logic analyzer to capture some data with the new sample positions.
- 2 In the Waveform window, find a valid DDR command cycle (for example, when $CAS=0$). The RAS, CAS, WE, and ADDR signals should all be valid on the rising edge of the clock (CK). If necessary, adjust the sample position for each of these signals so that the data eye is centered on the rising edge of the clock,
- 3 Capture some more data to ensure that the command signals are centered.

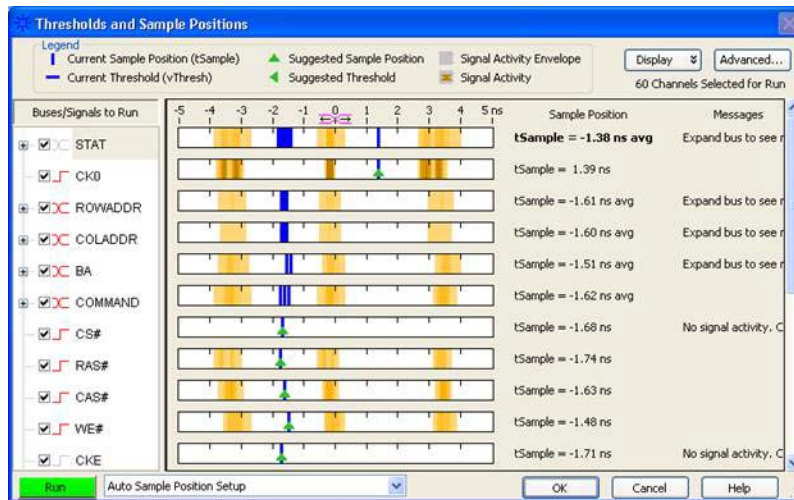
See also ["Example: Sampling Positions for Command and Address"](#) on page 25.

Set the sampling position for the clock

- 1 Set the sampling position for CK so that it is centered 1/4 clock period *after* the rising edge of CK. In other words, CK must sample itself midway between the rising and falling edges.

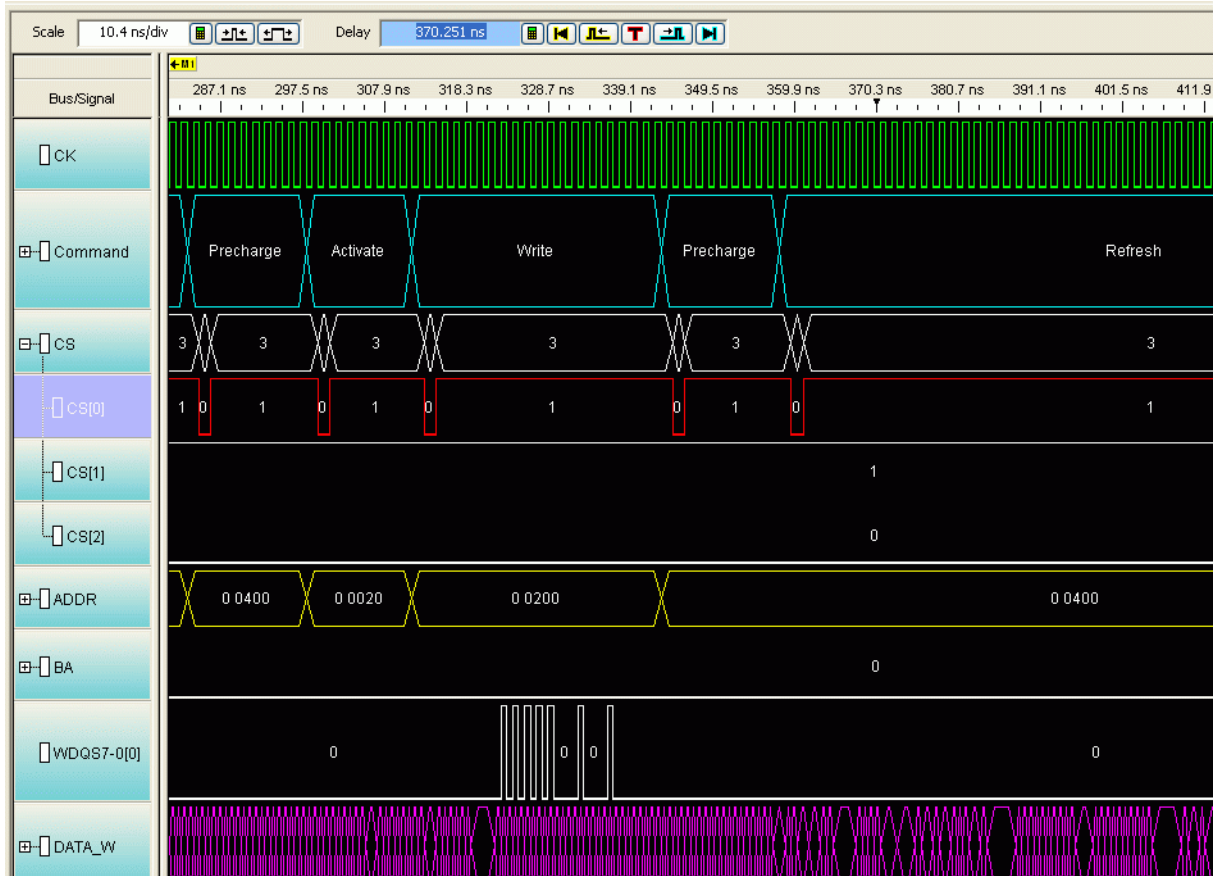
**Example:
Sampling Positions for Command and Address**

**Example:
Typical sample positions**



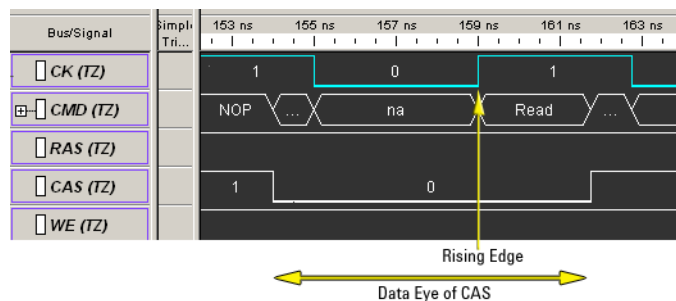
2 Setting Up for LPDDR Bus Decode

Example: Waveform display



Example: Manually adjusting sample positions

- 1 Run the logic analyzer to capture some data with the new sample positions.
- 2 In the Waveform window, find a valid DDR command cycle (for example, when CAS=0). The RAS, CAS, WE, and ADDR signals should all be valid on the rising edge of the clock (CK). If necessary, adjust the sample position for each of these signals so that the data eye is centered on the rising edge of the clock,

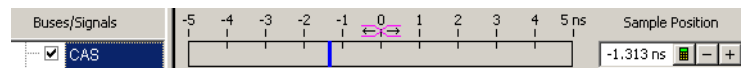


To do this:

- a For each signal, note how far it needs to move to be centered under the rising clock edge.

In the picture above, the center of CAS signal is about 1.3 ns before the rising edge of the clock. Note that since the other command signals are held high, you would need to find a different command cycle to see how the eyes of those signals line up with the clock.

- b Open the Sampling tab of the analyzer Setup dialog.
- c Select **Thresholds and Sample Positions...**
- d Change the sample positions.



- 3 Capture some more data to ensure that the command signals are centered.

To set sampling positions using DDR3 Eyefinder

The DDR3 Eyefinder is an extension of Keysight's eye finder and eye scan technology. It helps select sample positions for the data signals on the LPDDR2 bus.

The DDR3 Eyefinder application can be used to identify the correct sample position on the data bus. This tool is designed to work even when the target is not able to generate selective read-only or write-only activity on the memory bus. The application is able to selectively examine only the active data portion of read cycles or write cycles on a bus with mixed traffic.

NOTE

The Command and Address sample positions must be properly selected before utilizing this tool.

- See • "Your First DDR3 Eyefinder Scan" (in the online help)

To set sampling positions manually

If you have the ability to produce read-only and write-only data on the bus of your device under test (using ITP control or equivalent), you can generate patterns on the bus and set the sampling positions manually.

Data is valid on rising/falling edge of the associated data strobe signals, but the logic analyzer does not have the ability to latch data using the separate data strobes. Instead, the analyzer latches data based on the command clock (CK). The data strobes and CK are not necessarily in phase, thus the sample position for individual data signals must be adjusted relative to CK.

2 Setting Up for LPDDR Bus Decode

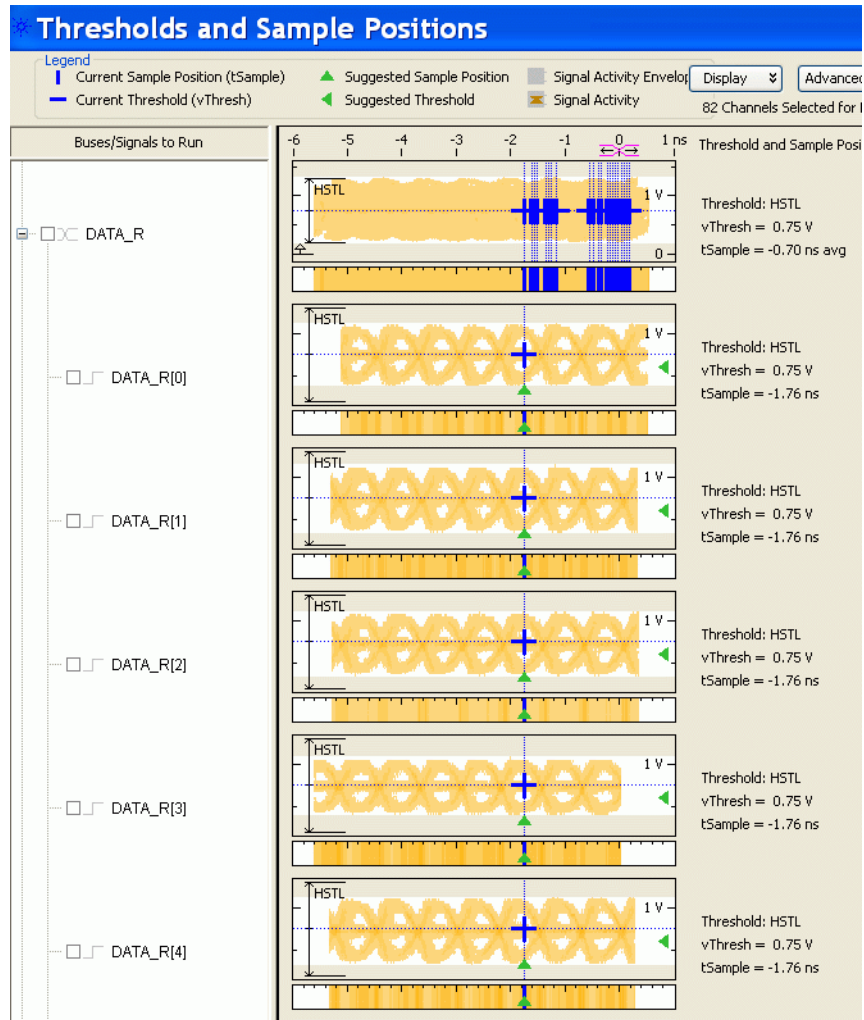
Keep in mind that read eyes and write eyes occur on the same signals, but at different times. A mix of read-data and write-data data will confuse eye finder because it will not be able to converge on a single eye. To use eye finder to refine the data sample positions, bus activity on the data bus must be limited to just reads or just writes.

Setting sample positions for Read Data

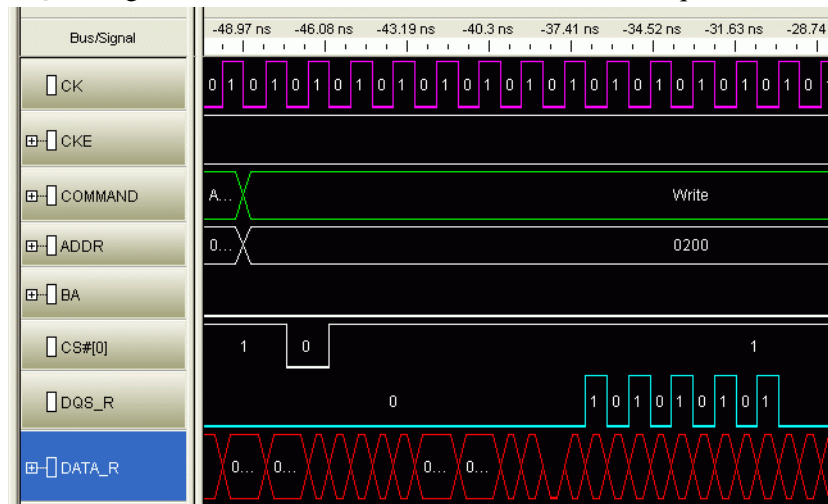
Once the Command and Address sample positions have been set, The next task is to identify the correct sample positions for the Read Data. The read data is synchronous to the DQS strobes. In a stable system there is a fixed *phase offset* between the common clock and the strobes. In addition, there is a fixed *clock delay* between the read commands and the start of each data transfer. The clock delay is entered into the decoder setup. The phase offset requires use of the Threshold and Sample Position tool using the Auto Eye Scan with Sample Position Setup Only application.

- 1 Set up your device under test to generate known, continuous read-only data patterns on the memory bus. A pattern that works well is alternating 0xFFFFFFFF and 0x00000000.
- 2 On the logic analyzer Threshold and Sample Positions menu deselect the Command and Address Group signals and select DATA_R, CB_R and DQS_R.
- 3 Run the Auto Eye Scan with Sample Position Setup Only application. The data bus is not actively driven between data transfers.

In many systems the signals float around the threshold. This signal level uncertainty between data transfers prevents the Threshold and Sample Positions tool from automatically selecting the correct sample position. The picture below provides an example of the results of an Eye Scan with Sample Position Setup Only and how to interpret the results to obtain the correct sample position.



- 4 Once the read data sample positions are selected, find the correct sample for the DQS_R signal. Utilize the waveform view of the state acquisition.



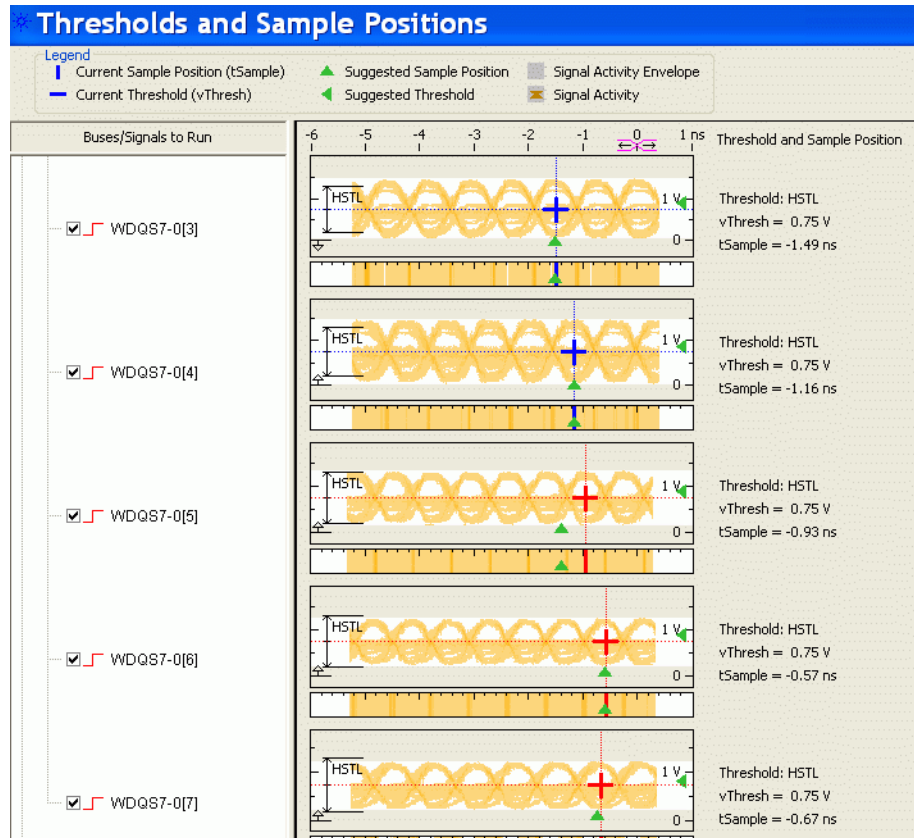
Setting Sample Positions for Write Data

The final group is the Write Data.

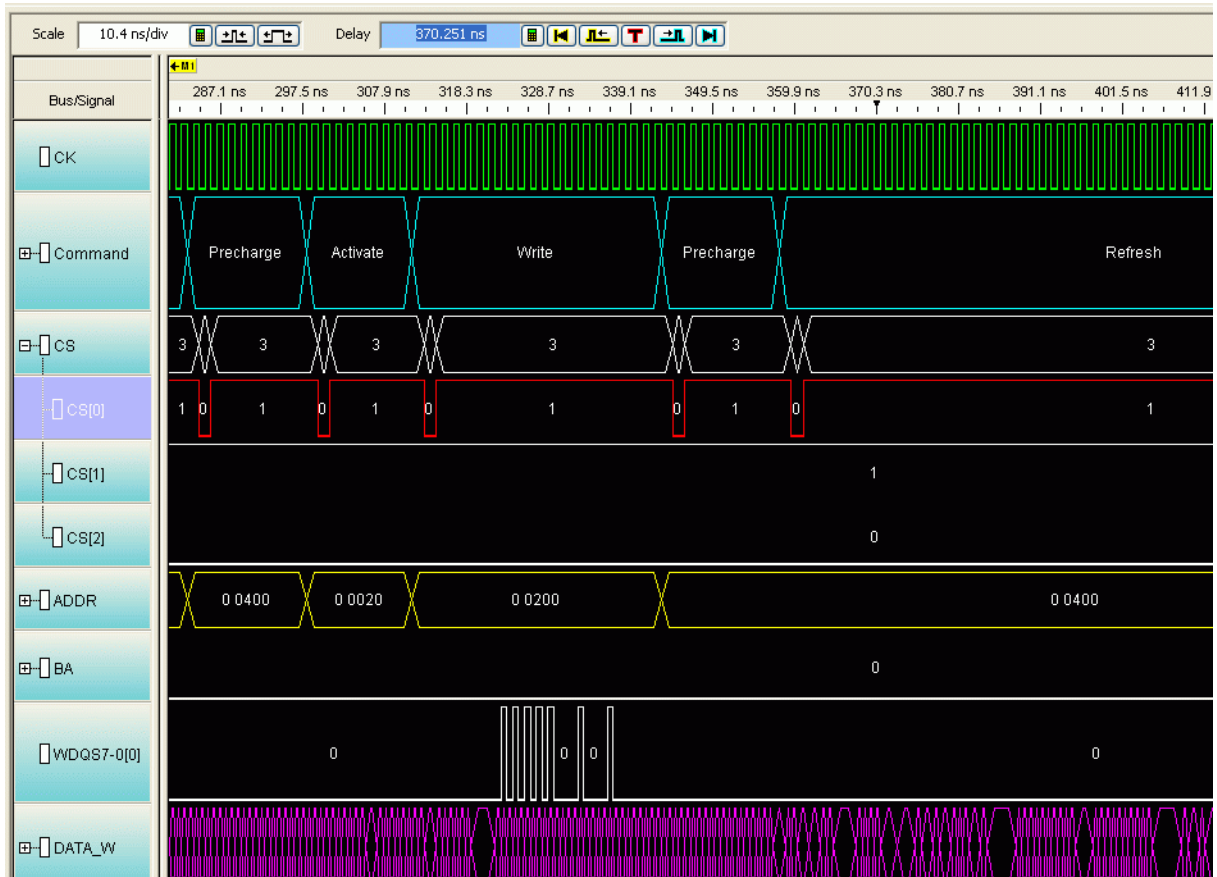
- 1 Set up your device under test to generate known, continuous write-only data patterns on the memory bus. A pattern that works well is alternating 0xFFFFFFFF and 0x00000000.
- 2 In the Threshold and Sample Positions tool deselect the read data group and select the DATA_W, DM_W, CB_W and DQS_W labels.
- 3 Run the sample position application as with the read data bus and set the sample position for each bit.

Some system do not utilize the Check Bit (ECC) signals or all of the Data Mask (DM) signals.

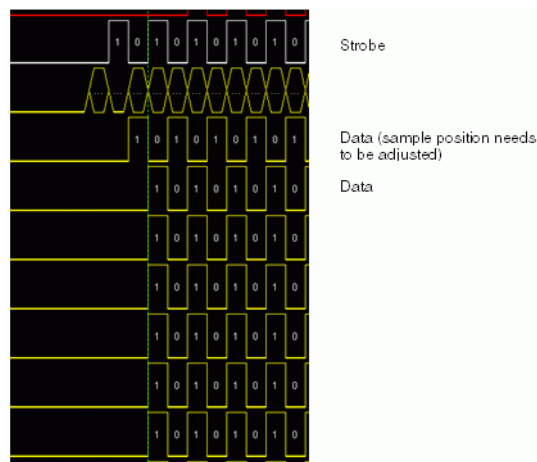
The picture below shows an example of the sample positions for Write Data:



2 Setting Up for LPDDR Bus Decode



- To check that all of the Write Data bits are aligned, configure the target to generate write-only traffic with an alternating 0/1 bit pattern. If necessary, select a different eye opening so that each DQ signal is sampled at the same time. In the following example, the first data bit needs to be adjusted:



You do not need to rerun Eye Scan, but you run the logic analyzer after each adjustment to verify the results.

- 5 When you are done, check the Listing display to verify that the bit patterns have been captured correctly.

Tips for setting sample positions

Remember that the waveform display on the logic analysis system is a state waveform (timing is aligned to each sample), not the timing waveform you would see if the logic analyzer was running in Timing mode.

The threshold settings for signals can have a significant effect on the ability of the logic analyzer to accurately sample the signals. Targets with asymmetric signal swings or using a voltage different from the 1.5 Volt standard may need additional modification to the standard logic analyzer configuration. If you are unable to find sample positions that support accurate sampling of the signals on the LPDDR2 bus, use the Auto Threshold and Sample Position Setup application in the Threshold and Sample Positions tool.

Because of the float time on the data bus between transfers, do not depend upon the thresholds or positions selected by this tool. Manually view each eye diagram and modify the threshold and position to best select the center of the active portion of each eye.

Generating Data for Auto Sample Position and Auto Threshold

In order to run Auto Sample Position Setup and Auto Threshold on the Data signals it is important that the device under test is programmed to generate exclusively Write or Read traffic of a known pattern, such as F's and 0's. This is the only way to get usable data windows to set the sampling positions of both the Read and Write Data labels on the logic analyzer. At these speeds even one half a data strobe bit width of timing relationship shift between the strobe (clock) and the data bits will eliminate the window.

Setting the Threshold

The Threshold setting for clocks and signals can have a significant effect on the size of the eyes. At speeds of 800 MT/s or higher even a 50 mV change in the threshold can make all the difference in the eye size as measured at the logic analyzer. The best way to determine this level is through trial and error, or through use of the Auto Threshold function.

2 Setting Up for LPDDR Bus Decode

3

Decoding Self Refresh and Power Down Events

The LPDDR Decoder supports decoding and displaying the entry to and exit from Self Refresh and Power Down events. Once data is captured and decoded, you can view the entry and exit from the following events in the Listing window of the Logic and Protocol Analyzer GUI.


- Power down
- Deep power down
- Self refresh

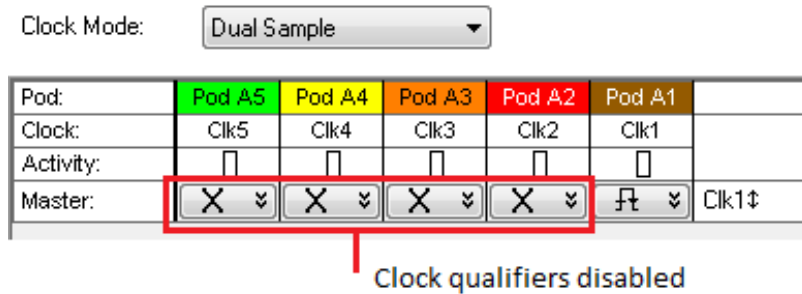
To ensure that entry and exit from these events are decoded and displayed in the Listing view, you need to complete the following steps before capturing data.

- Disable clock qualifiers
- Set the clock threshold

Disabling Clock Qualifiers

The LPDDR Decoder will not be able to decode and display power down and self refresh events if the clock qualifiers are enabled.


- 1 Access the **Sampling** tab of the **Analyzer Setup** dialog box by clicking the  toolbar button in the Logic and Protocol Analyzer GUI. Ensure that you have loaded the LPDDR configuration file/setup in the Logic and Protocol Analyzer GUI before this step.
- 2 In the **State Options** group box, select **Don't Care** for all the clock qualifiers to disable these qualifiers.

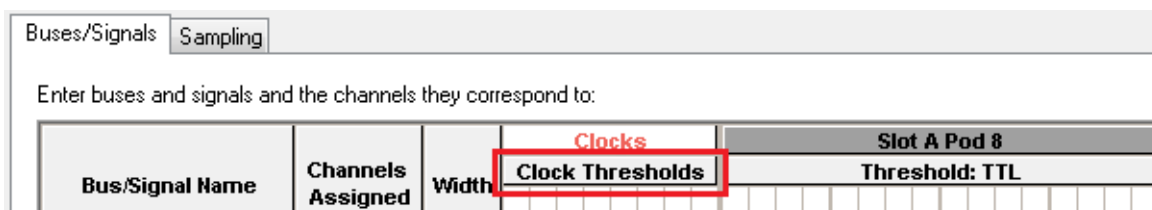


- 3 Click **OK**.

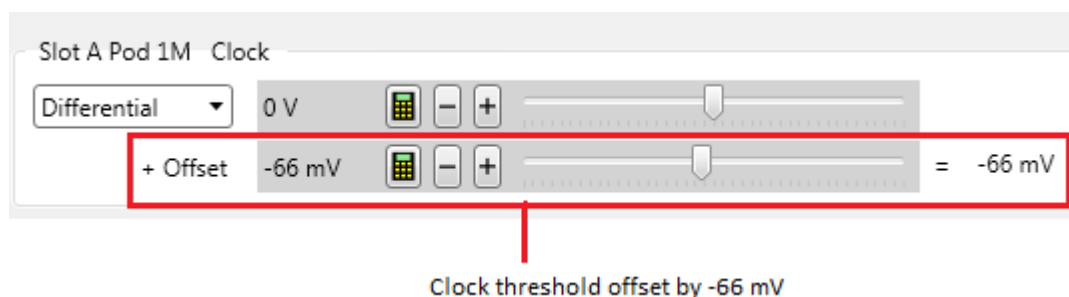
Setting the Clock Threshold

The clock threshold should be offset by a negative amount in the range of -60 to -70 mV.

- 1 Access the **Buses/Signals** tab of the **Analyzer Setup** dialog box by clicking the  toolbar button in the Logic and Protocol Analyzer GUI. Ensure that you have loaded the LPDDR configuration file/setup in the Logic and Protocol Analyzer GUI before this step.
- 2 Click the **Clock Thresholds** button displayed under the clock label.



- 3 In the **Threshold Settings for Clock Channels** dialog box, set the offset of the clock within the range -60 to -70 mV.



- 4 Click **Done**.

Viewing Power Down Events

Once the above-mentioned steps are performed, the self refresh and power down events are decoded and displayed. The following screen displays an example of an entry to and exit from the self refresh event in the Listing window.

1.040 ns	Deselect	Idle
	Enter Self Refresh CS-0	Self Refresh Entry
880 ps		Idle
960 ps	Deselect	Idle
960 ps		Idle
960 ps	Deselect	Idle
880 ps		Idle
43.835520 us	Clock is disabled	Clock Disabled
640 ps	Clock is disabled	Clock Disabled
1.040 ns	Clock is disabled	Clock Disabled
880 ps	Clock is disabled	Clock Disabled
960 ps	Clock is disabled	Clock Disabled
880 ps	Clock is disabled	Clock Disabled
1.040 ns	Clock is disabled	Clock Disabled
880 ps	Clock is disabled	Clock Disabled
960 ps	Clock is disabled	Clock Disabled
880 ps	Clock is disabled	Clock Disabled
1.040 ns	Clock is disabled	Clock Disabled
880 ps	Clock is disabled	Clock Disabled
960 ps	Clock is disabled	Clock Disabled
880 ps	Clock is disabled	Clock Disabled
1.040 ns	Clock is disabled	Clock Disabled
880 ps	Clock is disabled	Clock Disabled
960 ps	Clock is disabled	Clock Disabled
880 ps	Clock is disabled	Clock Disabled
1.040 ns	Clock is disabled	Clock Disabled
880 ps	Clock is disabled	Clock Disabled
960 ps	Clock is disabled	Clock Disabled
880 ps		Idle
1.040 ns	Deselect	Idle
	Exit Self Refresh CS-0	Self Refresh Exit
880 ps		Idle

Enabling/Disabling Decode and Display of Specific Power Down Exit Events

By default, the LPDDR Decoder decodes and records the specific power down event from which the DUT exited. This, however, requires extra processing time for ascertaining the specific exit event on the basis of the last entry event. If you want to reduce this processing time and do not want to view the specific power down event from which the DUT exited, then you can disable this feature.

When you disable this feature, the decoder records these power down entries and exits but does not decode the specific event in case of exits. Instead, it displays a generic exit label in the Listing for all such exit events.

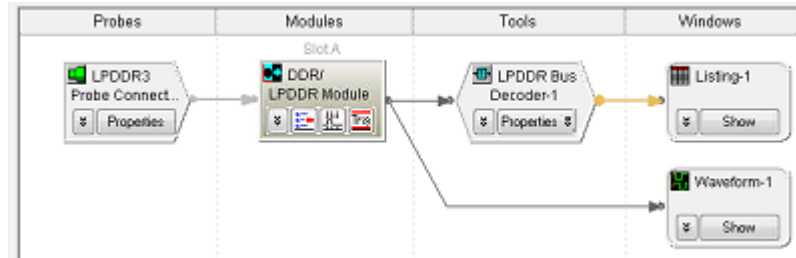
The following screen displays a Listing of such events when this specific exit event decoding feature is disabled. Notice that the exit is labeled as a generic exit from self refresh or power down conditions instead of a specific event from which the exit was made.

Time	Event	Exit
880 ps	Enter Self Refresh CS-0	Self Refresh Entry
880 ps		Idle
960 ps	Deselect	Idle
960 ps		Idle
960 ps	Deselect	Idle
880 ps		Idle
43.835520 us	Clock is disabled	Clock Disabled
640 ps	Clock is disabled	Clock Disabled
1.040 ns	Clock is disabled	Clock Disabled
880 ps	Clock is disabled	Clock Disabled
960 ps	Clock is disabled	Clock Disabled
880 ps	Clock is disabled	Clock Disabled
1.040 ns	Clock is disabled	Clock Disabled
880 ps	Clock is disabled	Clock Disabled
960 ps	Clock is disabled	Clock Disabled
880 ps	Clock is disabled	Clock Disabled
1.040 ns	Clock is disabled	Clock Disabled
880 ps	Clock is disabled	Clock Disabled
960 ps	Clock is disabled	Clock Disabled
880 ps	Clock is disabled	Clock Disabled
1.040 ns	Clock is disabled	Clock Disabled
880 ps	Clock is disabled	Clock Disabled
960 ps	Clock is disabled	Clock Disabled
880 ps	Clock is disabled	Clock Disabled
960 ps	Clock is disabled	Clock Disabled
880 ps		Idle
1.040 ns	Deselect	Idle
880 ps	Exit Self Refresh or Power Down CS-0	Self Refresh or Power Down Exit
880 ps		Idle

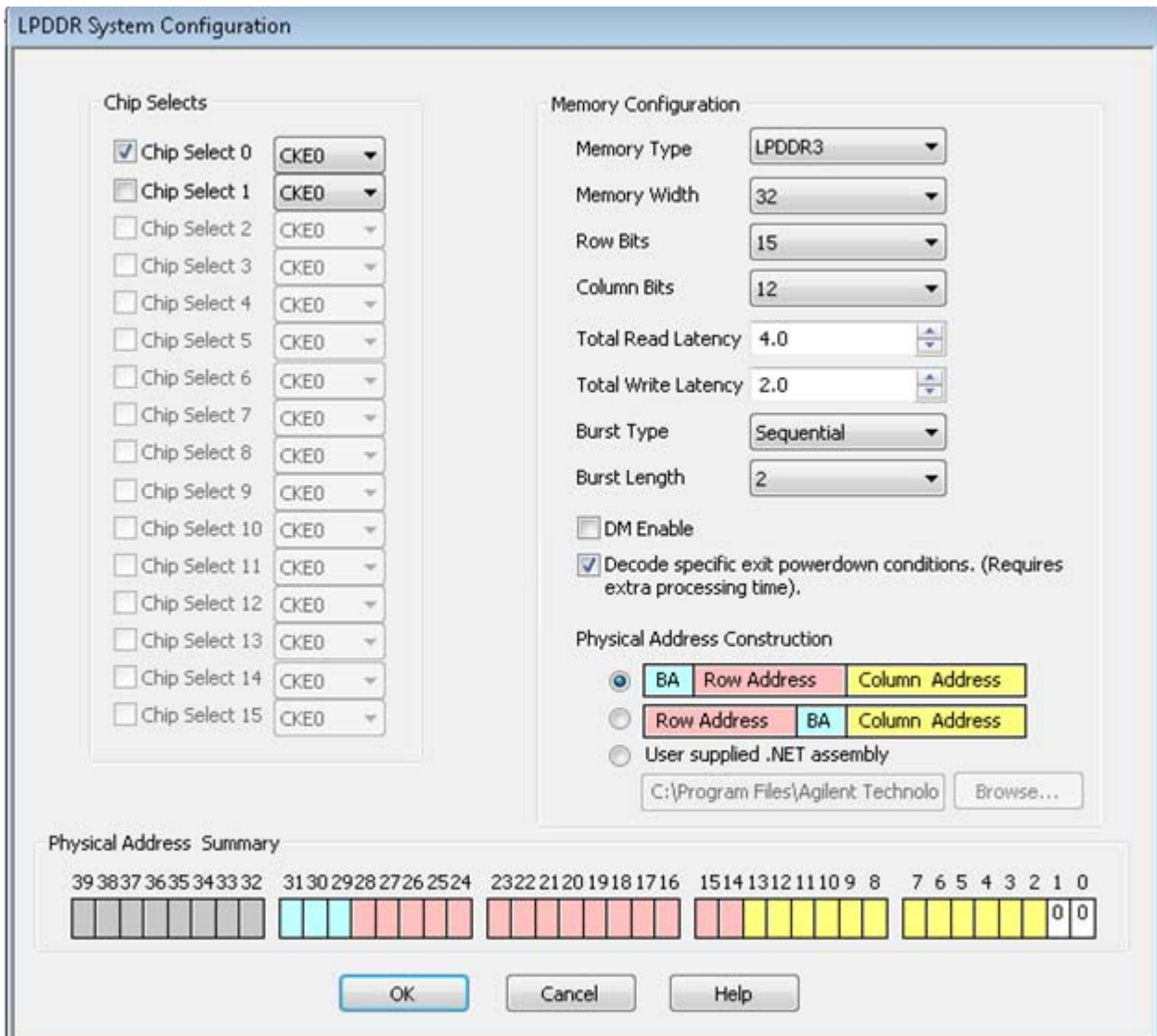
3 Decoding Self Refresh and Power Down Events

To enable/disable the display of specific exit events

- 1 In the **Overview** display, click the **Properties** button on the LPDDR Bus Decoder tool then select **System Configuration**.



The **LPDDR System Configuration** dialog box is displayed.



- 2 By default, the feature to decode specific exit power down events is enabled. To disable it, deselect the **Decode specific power down conditions** checkbox.
- 3 Click **OK**.

3 Decoding Self Refresh and Power Down Events

4 Capturing Data

To capture any data, the logic analyzer must run a measurement then end the measurement (either manually or by detecting a trigger).

To trigger on an address

Normally, the trigger will be an address detected on the bus.

- 1 Set the logic analyzer to trigger when the address is encountered. You may need to convert (see [page 44](#)) a physical address to the row and column addresses which will appear on the bus.
- 2 "Run" (in the online help) the logic analyzer.
- 3 Run the device under test.

The logic analyzer will trigger when address is found on the bus.

To convert to and from physical addresses

Use the Address Conversion Tool dialog to convert a physical (linear) address into an equivalent bank address. You can also use the tool to convert a bank/row/column address into a physical address. Before you use this tool, you must configure the decoder (see [page 19](#)).

The dialog contains three representations of the address:

- Bus Address
- Physical Address (hexadecimal)
- Physical Address (graphical summary showing each bit)

You can edit any of these representations. As you make changes, the other representations are calculated and displayed immediately.

To open the Address Conversion Tool dialog

- From the main menu bar, select **Tools>DDR Bus Decoder>Address Conversion Tool**, or
- In the Overview display, click the button on the DDR Bus Decoder tool and select **Address Conversion Tool**.

To convert a row/column address to a physical address

Enter the row address, column address, and bank address. These values will be constrained by the memory bus options you set in the System Configuration dialog. The physical address will be updated continuously to reflect the values you enter.

To convert a physical address to a row/column address

Enter the physical address. The other values will be updated continuously as you enter the address.

Address Summary

The address summary is a picture that shows how the physical address is constructed, based on user inputs for Memory Width, Row Bits, Column Bits, and Bank Address.

5 Understanding the Listing

The DDR data bus is displayed as raw hexadecimal data. The decoder does not inverse assemble the data payload.

Columns in the listing

For an explanation of the columns in the listing, see:

- ["Buses and Signals Captured by the Logic Analyzer"](#) on page 46
- ["Buses Generated by the Decoder"](#) on page 52

Buses and Signals Captured by the Logic Analyzer

Required input buses The following buses must be present in the input data to connect with the Keysight LPDDR/LPDDR2/LPDDR3 Decoder, DDR2/3 EyeFinder and DDR2/3 External Applications. They are automatically provided by the default configuration files. If you create your own configuration file (see [page 18](#)), be sure to define all of the required buses.

Bus Name	Description
ADDR	Address signals. 14 bits wide. (LPDDR1 only)
ROWADDR	Address signals used during an activate command. Typically these are called the Row Address signals. ROWADDR is typically used by the LPDDR decoder and by the DDR Trigger application. It is also used by a variety of tools to read the size of the ROWADDR to determine the number of Row bits valid during an active.
COLADDR	Address signals used during a read/write command. Typically these are called the Column Address signals. COLADDR is typically used by the LPDDR decoder and by the DDR Trigger application. It is also used by a variety of tools to read the size of the COLADDR to determine the number of Column bits valid during a read or write.
CK0	Clock signal used by LPDDR/LPDDR2/LPDDR3. This is the signal that was used to clock the analyzer. This signal must be a single bit.
CKE	Clock enable bits. 1 or more bits wide (depending on how many clock enable signals are used by your memory system). The decoder will decode a logic analyzer state only if the appropriate CKE bit is 1.
CS#	Chip select bits, 1 or more bits wide (depending on how many chip select signals are used by your memory system). The decoder will decode a logic analyzer state only if the appropriate CS# bit is 0.
BA	Bank address bits, 1 to 4 bits wide (depending on how many bank address signals are used by your memory system).
RAS#	RAS bit, 1 bit row address. (LPDDR1 only) RAS# bit is also defined in the STAT bus. Both RAS# and STAT need to be properly defined.
CAS#	CAS bit, 1 bit column address. (LPDDR1 only) CAS# bit is also defined in the STAT bus. Both CAS# and STAT need to be properly defined.
WE#	WE bit, 1 bit write enable. (LPDDR1 only) WE# bit is also defined in the STAT bus. Both WE# and STAT need to be properly defined.

Bus Name	Description
COMMAND	<p>For LPDDR1, COMMAND is a 3 bit wide bus used by a variety of the tools to simplify control operations. COMMAND contains the 3 bits RAS#, CAS#, WE# in the following order:</p> <ul style="list-style-type: none"> • COMMAND[2] = RAS# • COMMAND[1] = CAS# • COMMAND[0] = WE# <p>For LPDDR2 and LPDDR3, COMMAND is a 4-bit wide bus that encodes all of the LPDDR2 commands.</p> <p>For details on the symbolic names used for the COMMAND bus, see:</p> <ul style="list-style-type: none"> • "LPDDR2 Command Symbols" on page 49 • "LPDDR1 Command Symbols" on page 49 • "To find commands of a certain type in the listing" on page 50
DATA_R, DATA_W	Read and write data payloads. 8, 16, or 32 bits wide.
STAT	<p>LPDDR command and control signals.</p> <p>For LPDDR1, the STAT bus is 18 bits wide.</p> <p>For LPDDR2 and LPDDR3, the STAT bus is 21 bits wide.</p> <p>The decoder obtains all command and control information from the STAT bus plus the CKE and CS# signals. For convenience, some configuration files also display the signals with their own names.</p>

STAT Bus for LPDDR1

STAT bus	Signal name
STAT [0]	RAS#
STAT [1]	CAS#
STAT [2]	WE#
STAT [3]	ADDR[0]
STAT [4]	ADDR[1]
STAT [5]	ADDR[2]
STAT [6]	ADDR[3]
STAT [7]	ADDR[4]
STAT [8]	ADDR[5]
STAT [9]	ADDR[6]
STAT [10]	ADDR[7]
STAT [11]	ADDR[8]
STAT [12]	ADDR[9]
STAT [13]	ADDR[10]
STAT [14]	ADDR[11]

5 Understanding the Listing

STAT bus	Signal name
STAT [15]	ADDR[12]
STAT [16]	ADDR[13]
STAT [17]	CK0

STAT Bus for LPDDR2

STAT bus	Signal name
STAT [0]	CA9_0_R[0]
STAT [1]	CA9_0_R[1]
STAT [2]	CA9_0_R[2]
STAT [3]	CA9_0_R[3]
STAT [4]	CA9_0_R[4]
STAT [5]	CA9_0_R[5]
STAT [6]	CA9_0_R[6]
STAT [7]	CA9_0_R[7]
STAT [8]	CA9_0_R[8]
STAT [9]	CA9_0_R[9]
STAT [10]	CA9_0_F[0]
STAT [11]	CA9_0_F[1]
STAT [12]	CA9_0_F[2]
STAT [13]	CA9_0_F[3]
STAT [14]	CA9_0_F[4]
STAT [15]	CA9_0_F[5]
STAT [16]	CA9_0_F[6]
STAT [17]	CA9_0_F[7]
STAT [18]	CA9_0_F[8]
STAT [19]	CA9_0_F[9]
STAT [20]	CK0

Optional input buses and signals

There may be additional buses in Keysight-supplied configuration files. These are not required by the decoder but are helpful to the user.

Bus Name	Description
DM_W	Data Mask. If this bus exists and Data Mask Enable is enabled in the System Configuration dialog, the decoder will apply the DM_W to DATA_W data before displaying the data in the 'DDR Bus Decode' column. The number of bits in the bus must match the number of bytes in the DATA_W bus. The least significant bit of DM_W, if set, will mask the least significant byte of DATA_W. The bit ordering for the DM signals follows the convention used by JEDEC, where bit 0 is the least-significant bit.

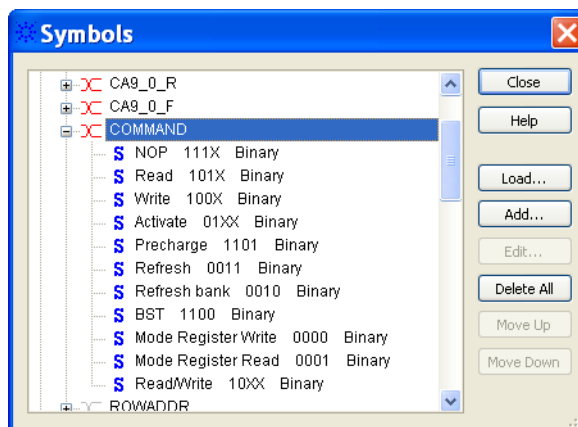
Other input buses and signals

These signal names are entirely optional. They are used by the DDR3 EyeFinder if they exist. The DDR3 EyeFinder will locate the eyes on the following signals:

Bus Name	Description
DQS_R	Data Strokes for Read
DQS_W	Data Strokes for Write

LPDDR2 Command Symbols

Command bus symbols for LPDDR2:



LPDDR1 Command Symbols

The Command bus for LPDDR1 consists of the signals RAS#, CAS#, and WE#.

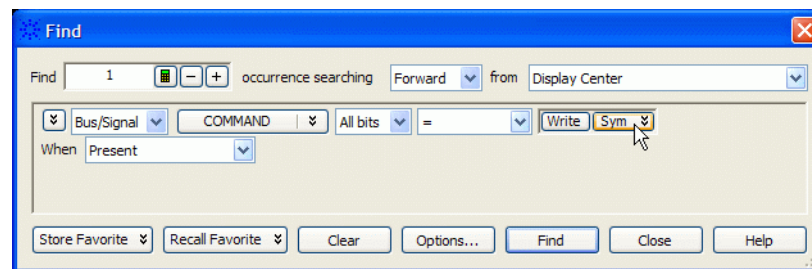
With the Command bus, the following symbols are defined:

5 Understanding the Listing

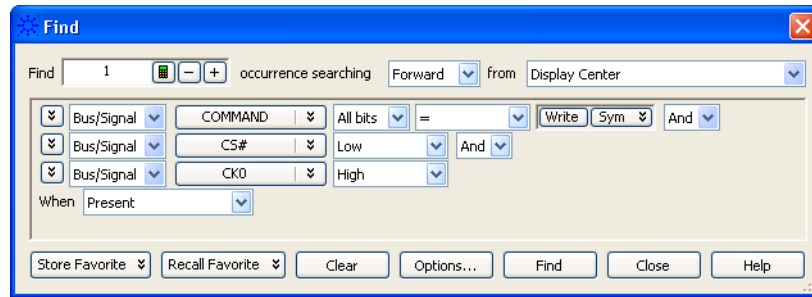
		Command bit		
Symbol	Description	[2]RAS#	[1]CAS#	[0] WE#
NOP		1	1	1
Activate		0	1	1
Read		1	0	1
Write		1	0	0
Read/Write		1	0	X
Burst Terminate		1	1	0
Precharge		0	1	0
Self Refresh		0	0	1
Mode Register Set	Supersedes user preferences. See "To configure the decoder" on page 19.	0	0	0

To find commands of a certain type in the listing

- 1 Open the Find dialog.
- 2 For the bus/signal name, choose **Command**.
- 3 Check that the numeric base is set to **Symbol**.
- 4 Select the command you wish to find.



For LPDDR2/LPDDR3, use "CS# = Low" and "CK0 = High" in the search.



Buses Generated by the Decoder

The decoder generates the following columns, which are displayed in the listing in addition to the input buses.

Physical Address When valid read or write data is present on a DDR cycle, the decoder will display the full physical address in this column. This address is constructed from the row, column, and bank address, based on the memory characteristics which were entered in the System Configuration (see [page 19](#)) dialog.

The initial physical address of a burst is shown in two places: on the main row of the Read or Write command and on the row of the first read or write. Repeating the value next to the command allows the value to appear in the Waveform display.

Sample Number	PhysicalAddress	DDR Bus Decode	Cycle Type
19301		not a command cycle	Idle
19302	00 0000 0025	Read CS-0 BA-0	Command
19302.1		Row Address = 0x020	*
19302.2		Col Address = 0x05	*
19302.3		Burst Type = Sequential (5, 6, 7, 4, 1, 2, ...)	*
19302.4	00 0000 0025	mem read 0x00	*
19302.5	00 0000 0026	mem read 0x00	*
19302.6	00 0000 0027	mem read 0x00	*
19302.7	00 0000 0024	mem read 0x00	*
19302.8	00 0000 0021	mem read 0x00	*
19302.9	00 0000 0022	mem read 0x00	*
19302.10	00 0000 0023	mem read 0x00	*
19302.11	00 0000 0020	mem read 0x00	*

DDR Bus Decode This column contains decoded data from the memory bus. Some of the things which can be displayed in this column include:

Decoded commands Decoded commands may cover several rows (a main row and several subrows which appear as part of one state).

In the example below, note that the subrows for the write (17466.1-17466.11) show data from the data cycles that are associated with the write (samples 17476 and following). Note also that these samples are marked as "Data Write" in the Cycle Type column.

Sample Number	Physical Address	DDR Bus Decode	Cycle Type
17461			Idle
17462		Deselect	Idle
17463			Idle
17464		Deselect	Idle
17465			Idle
17466	00 2000	Write CS-0 BA-0	Command
17466.1		Row Address = 0x020	*
17466.2		Col Address = 0x00	*
17466.3		Burst Type = Sequential (0, 1, 2, 3, 4, 5.	*
17466.4	00 2000	mem write 0x00	*
17466.5	00 2001	mem write 0x00	*
17466.6	00 2002	mem write 0x00	*
17466.7	00 2003	mem write 0x00	*
17466.8	00 2004	mem write 0x00	*
17466.9	00 2005	mem write 0x00	*
17466.10	00 2006	mem write 0xff	*
17466.11	00 2007	mem write 0x00	*
17467			Idle
17468		Deselect	Idle
17469			Idle
17470		Deselect	Idle
17471			Idle
17472		Deselect	Idle
17473			Idle
17474		Deselect	Idle
17475			Idle
17476		Deselect	Data Write
17477			Data Write
17478		Deselect	Data Write
17479			Data Write
17480		Deselect	Data Write
17481			Data Write
17482		Deselect	Data Write

Decode Errors An error message is displayed when the decoder can not decode the state. Examples include:

- "Please enable one or more chip selects"
- "More than one active chip select"
- "Required Buses/Signals are not present"

"Deselect" The message "Deselect" is not an error. It simply indicates states where there is nothing to decode and the chip selects are not being used (that is, they are deselected). Idle states are a common example of this.

This message appears only on the rising edge of the clock. The falling edge is left blank, because no valid command is possible on those states.

Cycle Type The decoder generates a cycle type column which shows summary information about each state. See ["Cycle Type"](#) on page 54 for an explanation.

Other buses The following buses and signals are generated by the decoder for its own use. They are generally not displayed as columns in the listing, but they are visible in some dialogs.

- TAG

See Also • ["Buses and Signals Captured by the Logic Analyzer"](#) on page 46

Cycle Type

Cycle Type columns The decoder generates data which identifies the type of memory operation for each state in the listing. This generated data appears in the listing as the Cycle Type column.

Cycle Type does not appear in the Bus/Signal Setup dialog because it contains information generated by the decoder, rather than information captured by the logic analyzer.

Predefined cycle type symbols Each cycle type value is a 32-bit integer. To avoid any need to interpret these values yourself, the configuration file defines symbols for each cycle type, such as idle, data read, or command.

The symbols are:

Bits	Meaning		
0-3	Command code	0 ==> Mode,	1 ==> Auto, 2 ==> Precharge etc
4	Command	1 ==> command,	0 ==> not command
5	Read	1 ==> read,	0 ==> not read (i.e. write)
6	Data	1 ==> data,	0 ==> not data
7	Subrow	1 ==> subrow	0 ==> not subrow (ie. mainrow)
8	Clock disabled	1 ==> clock disabled	0 ==> clock enabled
9	Decode Error	1 ==> decode error	0 ==> not decode error

Symbol	Binary Encoding (LS bits)	Hex Value	Don't Care Mask
Decode Error	xxxx xx1x xxxx xxxx	200	FFFF FDFE
Clock Disabled	xxxx xx01 xxxx xxxx	100	FFFF FC0F
Command & Data	xxxx xx00 01x1 xxxx	50	FFFF FC2F
Data	xxxx xx00 01xx xxxx	40	FFFF FC3F
Read data	xxxx xx00 011x xxxx	60	FFFF FC1F
Write data	xxxx xx00 010x xxxx	40	FFFF FC1F
Idle	xxxx xx00 00x0 xxxx	00	FFFF FC2F
Command	xxxx xx00 0xx1 xxxx	10	FFFF FC6F
Mode Set Command	xxxx xx00 0xx1 0000	10	FFFF FC60
Refresh Command	xxxx xx00 0xx1 0001	11	FFFF FC60
Precharge Command	xxxx xx00 0xx1 0010	12	FFFF FC60
Activate Command	xxxx xx00 0xx1 0011	13	FFFF FC60
Write Command	xxxx xx00 0xx1 0100	14	FFFF FC60
Read Command	xxxx xx00 0xx1 0101	15	FFFF FC60
BST Truncate	xxxx xx00 0xx1 0110	16	FFFF FC60
NOP	xxxx xx00 0xx1 0110	17	FFFF FC60
*	xxxx xx00 1xxx xxxx	80	FFFF FC7F
* R/W Data	xxxx xx00 11xx xxxx	C0	FFFF FC3F
* R/W Read Data	xxxx xx00 111x xxxx	E0	FFFF FC1F

* R/W Write Data xxxx xx00 110x xxxx C0 FFFF FC1F

Here are definitions of some of the more general cycle types:

Cycle Type	Meaning
Read Data	Clock is rising or falling and the data bus contains valid read data.
Write Data	Clock is rising or falling and the data bus contains valid write data.
Command	Clock is rising and a valid command (possibly Nop) is on the bus.
Idle	Clock is rising or falling and the data bus does not contain valid read/write data.
*	Subrows (also called subcycles) are generated by the decoder to show the data associated with a command. Each subrow is assigned a decimal sample number (such as "1234.5").
Decode Error	The decoder encountered an error while decoding the bus. The DDR Bus Decode column contains information about the cause of the error.

The order of the symbols is important

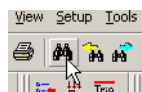
The first cycle type in this list which matches the value on the Cycle Type bus is the one which will be displayed.

Using Cycle Type to filter the display

You can set up a filter to hide states where Cycle Type is "Idle" or some other value you do not wish to see in the listing. To change the filter settings, see [Chapter 6](#), "Filtering or Colorizing the Display," starting on page 57.

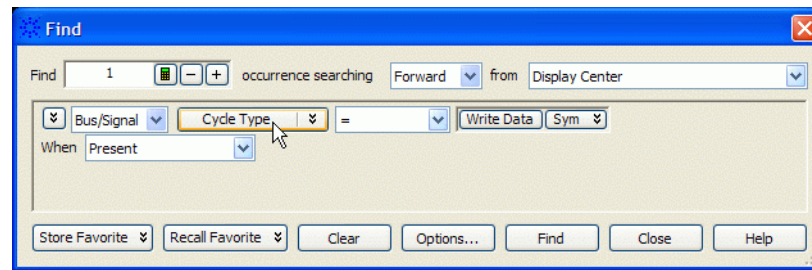
Using Cycle Type to find data of a certain type

- 1 Open the Find dialog.



- 2 Choose **Cycle Type** bus.

5 Understanding the Listing



- 3 Set the numeric base to **Symbol**.
- 4 Select the cycle type you wish to find.

6 Filtering or Colorizing the Display

The filter tool lets you show or suppress states, based on criteria such as the cycle type or chip select. You can also display each type of state in a different color.

The filter settings do not affect whether data is stored by the logic analyzer; they only affect whether that data is displayed or not. You can examine the same data with different settings, for different analysis requirements.

Filtering allows faster analysis in two ways. First, you can filter unneeded information out of the display. For example, suppressing idle states will show only states in which a transaction was completed.

Second, you can isolate particular operations by suppressing all other operations. For example, you can show just write commands, without the associated data.

To prevent certain data from being stored, use the logic analyzer's "storage qualification" (in the online help) feature.

See Also • "The filter/colorize tool" (in the online help)

6 Filtering or Colorizing the Display

7 Troubleshooting the Decoder

If you encounter difficulties while making measurements, use this help topic to guide you through some possible solutions. Each heading lists a problem you may encounter, along with some possible solutions.

When you obtain incorrect decoded results, it may be unclear whether the problem is in the connections, in your device under test, or in the decoder settings. If you follow the suggestions in this section to ensure that you are using the decoder correctly, you can proceed with confidence in debugging your device under test.

If you still have difficulty using the analyzer after trying these suggestions, please contact your Keysight Technologies representative.

CAUTION

When you are working with the analyzer, be sure to power down both the analyzer and the device under test before disconnecting or connecting cables or probes. Otherwise, you may damage circuitry in the analyzer or device under test.

Error messages

- | | |
|--|--|
| Decode Error | In the Cycle Type column, this indicates that decoding failed for some reason. See the DDR Bus Decode column for a description of the error. |
| "Slow or Missing Clock" error | <ul style="list-style-type: none">• Check that you have loaded the correct configuration file for the probe you are using. Signals are mapped differently, depending on which configuration file is loaded.• This error message might occur if the logic analyzer cards are not firmly seated in the logic analysis system frame. Ensure that the cards are firmly seated.• This error might occur if the device under test is not running properly. Ensure that the device under test is on and operating properly.• If the error message persists, check that the logic analyzer pods are connected to the proper connectors. |
| "Add In does not unattach from all labels!" error | <ul style="list-style-type: none">• This message can occur when you have loaded an .ala configuration file which was saved using a previous version of the decoder. To update the file to work with a new version of the decoder, see "To load a configuration file from a previous version of the decoder" on page 19 . |

7 Troubleshooting the Decoder

Slow performance If, just after capturing a trace, the logic analysis system "hangs up" and the following status message is displayed at the bottom of the screen, the decoder is busy decoding the captured data.



If the "Processing" message doesn't go away after a minute or two, it is possible that the decoder is searching through an enormous number of idle states in between "meaningful" states.

- Use the Cancel button to stop the decoder.



Intermittent data errors This problem is usually caused by poor connections, incorrect signal levels, or marginal timing.

- Remove and re-seat all cables and probes, ensuring that there are no bent pins or poor probe connections.
- Adjust the threshold level of the data pod to match the logic levels in the system under test.
- Use an oscilloscope to check the signal integrity of the data lines.
- Clock signals for the state analyzer must meet particular pulse shape and timing requirements. Data inputs for the analyzer must meet pulse shape and setup and hold time requirements.
- Check the sampling positions (see [page 22](#)).

See also Capacitive loading (see [page 61](#)) for information on other sources of intermittent data errors.

No activity on activity indicators

- Check for loose cables.
- Check for bent or damaged pins.

No trace list display If there is no trace list display, it may be that your trigger specification is not correct for the data you want to capture, or that the trace memory is only partially filled.

- Check your trigger sequence to ensure that it will capture the events of interest.
- Try stopping the analyzer; if the trace list is partially filled, this should display the contents of trace memory.

Analyzer won't power up	<p>If logic analyzer power is cycled when the logic analyzer is connected to a device under test that remains powered up, the logic analyzer may not be able to power up. Some logic analyzers are inhibited from powering up when they are connected to a device under test that is already powered up.</p> <ul style="list-style-type: none"> • Remove power from the device under test, then disconnect all logic analyzer cabling. This will allow the logic analyzer to power up. Reconnect logic analyzer cabling after power up.
Erratic trace measurements	<ul style="list-style-type: none"> • Do a full reset of the device under test before beginning the measurement. • Ensure that your device under test meets the timing requirements of the applicable JEDEC bus standard. • See Capacitive loading (see page 61). If the device under test design has extremely close timing margins, loading from probes may cause incorrect functioning and give erratic trace results. • Ensure that you have sufficient cooling for the device under test while the probes are installed.
Capacitive loading	<p>Excessive capacitive loading can degrade signals, resulting in incorrect capture, or system lockup in the microprocessor. All probes add additional capacitive loading, as can custom probe fixtures you design for your application.</p> <p>Careful layout of your device under test can minimize loading problems and result in better margins for your design. This is especially important for systems that are running at frequencies greater than 50 MHz.</p> <p>Remove as many pin protectors, extenders, and adapters as possible.</p>
No decoding or incorrect decoding	<p>This problem may be due to incorrect synchronization, modified configuration, incorrect connections, or a hardware problem in the device under test. A locked status line can cause incorrect or incomplete decoding.</p> <ul style="list-style-type: none"> • Ensure that each logic analyzer pod is connected to the correct connector. <p>There is not always a one-to-one correspondence between analyzer pod numbers and connector numbers. Probes must supply address, data, and status information to the analyzer in a predefined order.</p> <ul style="list-style-type: none"> • Check the activity indicators for status lines locked in a high or low state. • Check that the signals on the device under test are routed to the connector according to the manual for your probe. • Verify that the required input buses have not been modified from their default values. These buses must remain as they are configured by the configuration file. Do not change the names of these labels or the bit assignments within the labels. Some analysis probes also require other data labels. • Verify that storage qualification has not excluded storage of all the needed states. • Verify that you have correctly configured the sampling positions.
Decoder will not load or run	<ul style="list-style-type: none"> • Ensure that you have the correct software loaded on your analyzer.

7 Troubleshooting the Decoder

- Configuration files for the state analyzer contain a pointer to the name of the corresponding inverse assembler or decoder. If you delete the decoder or rename it, the configuration process will fail to load the decoder.

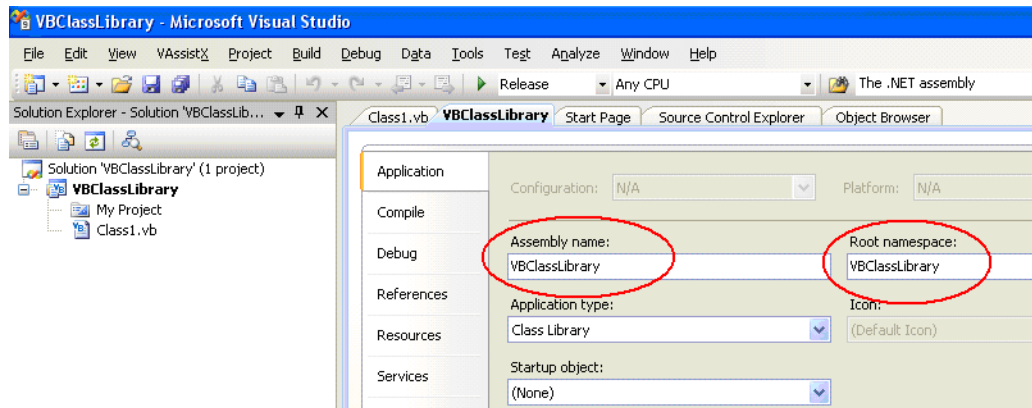
A Customizing Physical Address Construction

When to Customize the Physical Address Construction Algorithm

DDR memory systems use rank, bank address, row address and column address to construct a physical memory address. The algorithm for converting BA, RA and CA to physical address is implementation dependent. If your system constructs addresses using an order other than {BA,RA,CA}, you need to provide an algorithm to translate the bits which the logic analyzer captures into the BA, RA, and CA values. This algorithm is in the form of a .NET assembly .dll.

To create a custom algorithm

- 1 Create a Microsoft Visual Studio 2008 .NET assembly:
 - Use the class "DDRtoPhysical", which implements the methods described below.
 - The assembly name and the namespace are user defined but must be identical.



- 2 Select the "User supplied .NET assembly" button in the System Configuration dialog and specify the location of the .dll file you created. The default location is

```
C:\Program Files\Keysight Technologies\Logic Analyzer\  
DDRtoPhysical.dll
```

If the user has selected "User supplied .NET assembly" and the specified .dll does not exist; the user will get the following error message when he closes the System Configuration dialog.

The .NET assembly could not be found or is incorrect.
Physical Addresses will not be displayed

A Customizing Physical Address Construction

Methods in the .NET assembly

The AddressTranslationInit () method

```
bool AddressTranslationInit (CString strToolName, __int16 & nNumberOfBits)
```

Each DDR decoder on the LA workspace will call this method when it is initialized with a configuration file, or when the "OK" button is pressed in the "System Configuration" dialog.

Note: This means that the method may be called multiple times with the same ToolName. The method must tolerate this without an error return.

The .dll will use this method as an opportunity to display a GUI for the user to set assorted configuration parameters that will be used in the PhysicalAddress method such as number of row bits, number of column bits and number of bank address bits etc.

strToolName = Unicode string, The name of the DDR Bus decode tool. Since it is possible for the user to have multiple memory systems, each with it's own DDR bus decode tool, it is necessary to tell the AddressTranslationInit () method and the PhysicalAddress() method which instance of the DDR bus decoder is making the request; e.g. In the following example there are two instances of the bus decoder. One is called 'DDR Bus Decoder-1' and one is called 'DDR Bus Decoder-2'. Note: it is the responsibility of the .dll to maintain a data structure of each call to AddressTranslationInit (); i.e. for each strToolName.

nNumberOfBits = Return value: number of bits of physical address to be displayed by the decoder.

If the call to the method throws an exception (method does not exist, parameter list is wrong etc.) the decoder will display the following error message and will display all subsequent physical address as <blank>.

```
Unable to invoke member AddressTranslationInit().  
Physical Addresses will not be displayed
```

If the call to the method succeeds but the method returns false, the decoder will display the following error message and will display all subsequent physical address as <blank>.

```
DDRtoPhysical::AddressTranslationInit() returned false.  
Physical Addresses will not be displayed
```

The decoder proceeds with decode, displaying all Physical Addresses as <blank>. In this case, the decoder will never call the PhysicalAddress() method. Note: we display <blank> rather than "unknown" because the Physical Address label is a numeric label, not a string label.

The PhysicalAddress () method

```
bool PhysicalAddress ( CString strToolName,  
                    __int16 RankAdd,  
                    __int16 BankAddr,  
                    __int16 RowAddr,  
                    __int16 ColAddr,  
                    __int64 & PhysicalAddress)
```


If the user has selected "User supplied .NET assembly", the DDR tool will call this method each time it needs to compute a physical address.

strToolName = The tool name as described above in the Init() method. The PhysicalAddress() method may choose to ignore this parameter, or it may use it to apply a unique algorithm based on the tool name and its associated AddressTranslationInit ().

RankAddr = Rank address

BankAddr = Bank address bits

RowAddr = Address bus for applicable activate command

ColAddr = Address bus for applicable R/W command

PhysicalAddress = return value

If the call to the method throws an exception (method does not exist, parameter list is wrong etc.) the decoder will display the following error message and will display all subsequent physical address as <blank>.

```
Unable to Invoke member PhysicalAddress().
Physical Addresses will not be displayed
```

If the call to the method succeeds but the method returns false, the decoder will display the following error message and will display all subsequent physical address as <blank>.

```
DDRtoPhysical::PhysicalAddress() returned false.
Physical Addresses will not be displayed
```

**The
BusAddress()
method**

```
bool BusAddress ( CString strToolName,
                 __int16 &RankAddr,
                 __int16 &BankAddr,
                 __int16 &RowAddr,
                 __int16 &ColAddr,
                 __int64 PhysicalAddress)
```

This is an optional method. If it exists and if the user has selected "User supplied .NET assembly", the method will be used by the Address Conversion tool to convert physical addresses to bus addresses.

strToolName = The tool name as described above in the Init() method. The BusAddress() method may choose to ignore this parameter, or it may use it to apply a unique algorithm based on the tool name and its associated AddressTranslationInit ().

RankAddr = Return Value

BankAddr = Return Value

RowAddr = Return Value

ColAddr = Return Value

PhysicalAddress = Physical address to be converted to Rank, Bank, Row, Column

A Customizing Physical Address Construction

If the call to the method throws an exception (method does not exist, parameter list is wrong etc.) the decoder will display the following error message and all controls in the Address Conversion dialog will be disabled.

```
Unable to Invoke member BusAddress().  
Address Conversion dialog disabled
```

If the call to the method succeeds but the method returns false, the decoder will display the following error message.

```
DDRtoPhysical::BusAddress() returned false.  
Address Conversion dialog disabled
```

The NameChanged() method

```
bool NameChanged ( CString strOldToolName, CString strNewToolName)
```

This method will be called whenever the user changes the name of the bus decoder in the overview. The method is also called when loading a config file. In this case, the OldToolName and the NewToolName are identical.

If the call to the method throws an exception (method does not exist, parameter list is wrong etc.) the decoder will display the following error message and will display all subsequent physical address as <blank>.

```
Unable to Invoke member NameChanged().  
Physical Addresses will not be displayed
```

If the call to the method succeeds but the method returns false, the decoder will display the following error message and will display all subsequent physical address as <blank>.

```
DDRtoPhysical::NameChanged() returned false.  
Physical Addresses will not be displayed
```

Sample DDRtoPhysical class

```
Public Class DDRtoPhysical  
  
    Public Function AddressTranslationInit(ByVal strToolNameAsString, _  
        ByVal nNumberOfBitsAsInt16) AsBoolean  
  
        MsgBox("In AddressTranslationInit. ToolName = " & strToolName)  
  
        nNumberOfBits = 48  
  
        Return True  
  
    End Function  
  
    Public Function PhysicalAddress(ByVal strToolNameAsString, _  
        ByVal nRankAddrAsInt16, ByVal nBankAddrAsInt16, _  
        ByVal nRowAddrAsInt16, ByVal nColAddrAsInt16, _  
        ByVal nAddressAsInt64) AsBoolean  
  
        nAddress = nRankAddr + nBankAddr + nRowAddr + nColAddr  
  
        Return True  
  
    End Function
```

```
Public Function BusAddress(ByVal strToolNameAsString, _
    ByRef nRankAddrAsInt16, ByRef nBankAddrAsInt16, _
    ByRef nRowAddrAsInt16, ByRef nColAddrAsInt16, _
    ByVal nAddressAsInt64) AsBoolean

    nRankAddr = nAddress + 1

    nBankAddr = nAddress + 2

    nRowAddr = nAddress + 3

    nColAddr = nAddress + 4

    Return True

End Function

Public Function NameChanged(ByVal strToolOldNameAsString, _
    ByVal strToolNewNameAsString) AsBoolean

    MsgBox("In NameChanged: Old name = " & strToolOldName & _
        " New name = " & strToolNewName)

    Return True

End Function

End Class
```

A Customizing Physical Address Construction

Index

Symbols

in listing, 45

B

B4623B LPDDR bus decoder, 7

Buses and signals captured by the logic analyzer, 46, 52

C

clock qualifiers, 35

COLADDR[0], 21

color, decoder listing, 57

configuration file, loading, 17

configuration file, loading from previous version, 19

Cycle Type, 54

D

Deselect, 52

E

errors, 59

F

filtering the LPDDR display, 57

L

license, LPDDR bus decoder, 11

LPDDR, 7

LPDDR bus decoder, 7

LPDDR bus decoder, configuring, 17

LPDDR bus decoder, installing software, 11

LPDDR bus overview, 7

LPDDR data, capturing, 43

LPDDR device under test, connecting to, 16

LPDDR properties, 19

LPDDR1, 7

LPDDR2, 7

P

power down, 35, 38

problems, 59

S

self refresh, 35

slow or missing clock error, 59

Source bus, 52

T

Tag Bits, 54

trigger, LPDDR, 43

trigger, unwanted, 59

troubleshooting, 59

U

Understanding the Decoded Listing, 45

W

W2637A LPDDR x16 BGA probe, 7

W2638A LPDDR x32 BGA probe, 7

